

W H I POWER W H I A

PERFORMANCE PEDIGREE S

APRIL 15, 2023 1 PM
MOUNTAIN GROVE, MISSOURI

POWER FEMALES
PERFORMANCE BULLS
PEDIGREE SHOW CATTLE

Bid Online www.LiveWireAuction.com



April 15, 2023
1 PM
Wright County
Livestock Auction
Mountain Grove, MO

Sale Location: 8915 Business 60, Mountain Grove, MO 65711



AUCTIONEER
Jerry Lehmann
573-999-4759



RINGMAN
Scott Crawford
816-804-1410



RINGMAN
Brett Sayre
573-881-1876



**PICTURES, VIDEOS, & ONLINE
BIDDING AVAILABLE**

Dear Cattlemen & Cattlewomen-

I am so excited to invite you to the inaugural Power Performance Pedigree Sale. An extraordinary set of consigners have brought you an elite set of performance tested and pedigreed animals. The animals in this sale must qualify for the sale through DNA and EPD's. Power & performance cattle bulls must have 8 and females 7 of the EPDs in the catalog TOP 50% or better, and show animals must be halter broke and able to lead. We feel this will give you the best set of animals available for purchase, and give you every bit of available information in your decision making progress.

Whether you plan to attend the sale in person, bid via phone or Internet, we are here for you! We have 4 experienced and knowledgeable sale representatives that are here to help. These individuals can evaluate lots or handle bids for you. Rest assured proxy bids, phone bids, and Internet bids are handled in a secure and confidential matter.

The set of bulls and females in this sale are some of the best animals available with many of them having EPDs that are TOP 1%. Many of our consigners have noted, they wanted to bring you something really special and that it is hard to want to part with such an excellent animal. There are many sale attractions throughout the catalog. Whatever we can do to help you please let us know. We want you, your family, and farm to be successful and safe.

Saturday April 15th, 2023 will be a great day for Angus in Midwest, so mark your calendar and be sure to join us!

Thank you-



Phoebe Wiles
Sale Manager
417-293-8002

SALE DAY PHONES:
SALE MANAGER AND RINGMEN
Online Bidding
www.LiveWireAuction.com

JUNIORS & 4H/FFA YOUTH

There will be a drawing before the sale for multiple \$100 junior discounts to be used on the purchase of any female during the sale. The raffle is limited to one use per junior per year.

All buyers invited to view the sale animals morning of sale day.

Rules for the Spring 2023 Sale

This is The Power Performance Pedigree Sale held in Mountain Grove, MO. Commercial and purebred buyers will have individual performance data available, along with pedigree, to select prospective bulls and females.

- A. The bulls eligible for the sale must be no older than 30 months at sale date.
- B. The females eligible for the sale must be no older than 7 years at sale date.
- C. All bulls nominated must be weighed at weaning (between 160 and 280 days of age.)
- D. The bull's yearling weight must be taken (320 to 440 days). He must have a 365 day weight of 950 pounds or better.
- E. Performance Bulls must rank in the 50th percentile or better for 8 of the following EPD traits: CED, BW, WW, YW, RADG, SC, HP, CEM, Milk, Doc, CW, Marb, RE, Fat, \$M, \$W, \$B, and \$C for non-parent bulls in the most recent sire evaluation.
- F. Performance Females must rank in the 50th percentile or better for 7 of the following EPD traits: CED, BW, WW, YW, RADG, SC, HP, CEM, Milk, Doc, CW, Marb, RE, Fat, \$M, \$W, \$B, and \$C for non-parent cows or current dams based on age. "A" lots may qualify through their dam.
- G. Show cattle may qualify as long as they are halter broke and able to lead.
- H. All lots over 7 months of age should have DNA & a genomic profile applied for.
- I. Age of dam adjustments will follow the breed associations guidelines.
- J. All bulls must be semen tested and examined for breeding soundness by a veterinarian within 60 days of sale, using standard assay analysis of semen approved by the College of Veterinary Medicine, University of Missouri.
- K. Scrotal circumference as taken by the producer's veterinarian during the breeding soundness exam will be reported sale day. Minimum circumference 33cm.
- L. All animals will be at the sale location by 6:00 p.m. day prior to the sale.
- M. Information not available at press time will be available sale day on supplemental sheets.
- N. All cows that sell as bred and safe in calf must have a pregnancy examination within 30 days of sale and stated stage on health papers.
- O. Consignors shall furnish an official health certificate issued within 30 days of sale date. All calves old enough to be split from dams will need a separate health paper.
- P. Shipping & Handling Cost of Embryos and Semen is the buyers expense.

TERMS AND CONDITIONS

TIME: Sale begins at 1:00 p.m. April 15, 2023.

BIDDING: A floor price will be \$2000 on bulls.

TERMS: The terms of the sale are cash. Bring your personal or local bank check.

DISPUTES: The auctioneer will settle any and all disputes as to bids by declaring all bids off and reselling the animal in question.

HANDLING: Each animal will be purchaser's risk as soon as sold, but will be cared for by the owner for a reasonable period until they are loaded, free of charge to the purchaser but at his risk of loss or injury. All animals are sold and will be paid prior to loading.

CERTIFICATES: A certificate of registry and transfer will be furnished for each animal sold by respective breeder.

BREEDING GUARANTEE: All animals of breeding age (15 months or older) at time of sale are guaranteed breeders. Animals are guaranteed breeders if properly cared for and not used within the herd until 15 months of age. Any bull which settles at least one third of the healthy cows he breeds will be considered a breeder. Any animal that has not proven itself a breeder within six months after the sale date, if in healthy condition, and meeting the health regulations of the State of Missouri, may be returned to the farm of the seller, at the buyer's expense. The seller reserves the privilege of trying for a period of six months, to prove the animal a breeder. Should an animal fail to prove a breeder in the specified time period, the seller will refund the purchase price which shall be considered as full settlement and satisfaction of all claims. All complaints regarding breeding difficulties must be reported in writing by the buyer to the seller within six months.

EMBRYO GUARANTEE: Embryo conception guarantee will be stated for each lot. Embryos are guaranteed if transferred by a licensed embryologist or Whitaker Embryo Transfer. Guarantee for establishment of 60-day pregnancy, failure of pregnancy must be verified by vet. Buyers of embryo packages that fail to establish the pregnancy rate will be given additional embryos from the seller from the same mating, or another of similar value. The transfers must take place within a year of the sale date, and seller must be notified within a reasonable period of time of the failure to produce a pregnancy.

ANNOUNCEMENTS: Announcements from the auction box will take precedence over the printed matter in this catalog.

CONTRACT: The above terms and guarantee shall constitute a contract between the buyer and seller of each animal sold. All animals sell under the standard terms and conditions set forth by the American Angus Association.

SALE ORDER: The lots will sell from the oldest to the youngest, in their respective classes. In cases of identical birth dates, the bull with the greater yearling EPD will sell first. The females will sell from the oldest to the youngest. In cases of identical birth dates, the female with the greater yearling/weaning EPD will sell first.

HEALTH: Bulls have been vaccinated for five strains of Lepto within 60 days of the sale. Health certificates will be furnished. Non-virgin and bulls over 24 months in age will be tested for trich.

LIABILITY: All persons who attend the sale do so at their own risk, the sale committee, The Power Performance Pedigree Sale, Live Wire Auction LLC, and Wright County Livestock Auction assume no liability, legal, or otherwise.

Expected Progeny Difference (EPD), is the prediction of how future progeny of each animal are expected to perform relative to the progeny of other animals listed in the database. EPDs are expressed in units of measure for the trait, plus or minus. Interim EPDs may appear on young animals when their performance has yet to be incorporated into the American Angus Association National Cattle Evaluation (NCE) procedures. This EPD will be preceded by an "I", and may or may not include the animal's own performance record for a particular trait, depending on its availability, appropriate contemporary grouping, or data edits needed for NCE.

Accuracy (ACC), is the reliability that can be placed on the EPD. An accuracy of close to 1.0 indicates higher reliability. Accuracy is impacted by the number of progeny and ancestral records included in the analysis.

Percentile Rank - As the percentile moves toward 1, it indicates this animal is top X% of the Angus Breed

Calving Ease Direct (CED), is expressed as a difference in percentage of unassisted births, with a higher value indicating greater calving ease in first-calf heifers. It predicts the average difference in ease with which a sire's calves will be born when he is bred to first-calf heifers.

Birth Weight EPD (BW), expressed in pounds, is a predictor of a sire's ability to transmit birth weight to his progeny compared to that of other sires.

Weaning Weight EPD (WW), expressed in pounds, is a predictor of a sire's ability to transmit weaning growth to his progeny compared to that of other sires.

Yearling Weight EPD (YW), expressed in pounds, is a predictor of a sire's ability to transmit yearling growth to his progeny compared to that of other sires.

Residual Average Daily Gain (RADG), expressed in pounds per day, is a predictor of a sire's genetic ability for postweaning gain in future progeny compared to that of other sires, given a constant amount of feed consumed.

Scrotal Circumference EPD (SC), expressed in centimeters, is a predictor of the difference in transmitting ability for scrotal size compared to that of other sires.

Heifer Pregnancy (HP), is a selection tool to increase the probability or chance of a sire's daughters becoming pregnant as first-calf heifers during a normal breeding season. A higher EPD is the more favorable direction and the EPD is reported in percentage units.

Calving Ease Maternal (CEM), is expressed as a difference in percentage of unassisted births with a higher value indicating greater calving ease in first-calf daughters. It predicts the average ease with which a sire's daughters will calve as first-calf heifers when compared to daughters of other sires.

Maternal Milk EPD (Milk), is a predictor of a sire's genetic merit for milk and mothering ability as expressed in his daughters compared to daughters of other sires. In other words, it is that part of a calf's weaning weight attributed to milk and mothering ability.

Docility (Doc), is expressed as a difference in yearling cattle temperament, with a higher value indicating more favorable docility. It predicts the average difference of progeny from a sire in comparison with another sire's calves. In herds where temperament problems are not an issue, this expected difference would not be realized.

Carcass Weight EPD (CW), expressed in pounds is a predictor of the differences in hot carcass weight of a sire's progeny compared to progeny of other sires.

Marbling EPD (Marb), expressed as a fraction of the difference in USDA marbling score of a sire's progeny compared to progeny of other sires.

Ribeye Area EPD (RE), expressed in square inches, is a predictor of the difference in ribeye area of a sire's progeny compared to progeny of other sires.

More on EPD's

Fat Thickness EPD (Fat), expressed in inches, is a predictor of the differences in external fat thickness at the 12th rib (as measured between the 12th and 13th ribs) of a sire's progeny compared to progeny of other sires.

Maternal Weaned Calf Value (\$M), an index, expressed in dollars per head, predicts profitability differences from conception to weaning with the underlying breeding objective assuming that individuals retain their own replacement females within herd and sell the rest of the cull female and all male progeny as feeder calves. The model assumes commercial producers will replace 25% of their breeding females in the first generation and 20% of their breeding females in each subsequent generation. Traits included are as follows: calving ease direct, calving ease maternal, weaning weight, milk, heifer pregnancy, docility, mature cow weight, claw set and foot angle.

Weaned Calf Value (\$W), an index, expressed in dollars per head, to predict profitability differences in progeny due to genetics from birth to weaning. The underlying objective being producers will retain 20% of the female progeny as replacements and sell the rest of the cull females and their male counterparts as feeder calves. Traits included are as follows (in no particular order): birth weight, weaning weight, milk, and mature cow weight.

Beef Value (\$B), a terminal index, expressed in dollars per carcass, to predict profitability differences in progeny due to genetics for postweaning and carcass traits. This terminal index assumes commercial producers wean all male and female progeny, retain ownership of these animals through the feedlot phase and market these animals on a carcass grid. Traits included in the index are as follows: yearling weight, dry-matter intake, marbling, carcass weight, ribeye area and fat.

Combined Value (\$C), an index, expressed in dollars per head, which includes all traits that make up both Maternal Weaned Calf Value (\$M) and Beef Value (\$B) with the objective that commercial producers will replace 20% of their breeding females per year with replacement heifers retained within their own herd. The remaining cull heifer and steer progeny are then assumed to be sent to the feedlot where the producers retain ownership of those cattle and sell them on a quality-based carcass merit grid. Expected progeny differences (EPDs) directly influencing a combined index: calving ease direct (CED) and maternal (CEM), weaning weight (WW), yearling weight (YW), maternal milk (Milk), heifer pregnancy (HP), docility (DOC), mature cow weight (MW), foot angle (Angle), claw set (Claw), dry matter intake (DMI), marbling (Marb), carcass weight (CW), ribeye area (RE) and fat thickness (Fat).

Abbreviations

(I*) Interim EPDs - Interim EPDs are EPDS that are calculate as a provisional or temporary EPDs. Interim with pedigree only- in this case only pedigree information is available, sometimes called a pedigree index, and past relatives EPDs are involved in calculating the interim EPD. While admittedly low in accuracy, an interim value gives you a snapshot of the animal's value as a parent, and, thus, it provides a temporary selection-decision tool.

Fall 2022 Breed Averages EPDs & \$Values

	CED	BW	WW	YW	RADG	SC	Doc	HP	CEM	Milk	CW	Marb	RE	Fat	\$M	\$W	\$B	\$C
Non-Parent Bulls	6	1.2	61	108	0.25	0.86	18	11.8	8	27	48	0.63	0.62	0.013	62	57	138	241
Current Dams	6	1.3	56	98	0.23	0.76	15	11.4	8	26	39	0.53	0.51	0.012	59	52	128	224
Non-Parent Cows	6	1.2	60	107	0.26	0.84	18	11.5	8	26	48	0.66	0.64	0.011	62	56	139	241

1 VA IMAGE MAKER

Bull DOB: 12/20/20 Tattoo: I136 Reg: 20240072

H A Image Maker 0415
Mead Image Maker S1528
 Mead Queen Lavilla Q1386
 Mead Final Choice L239
Mead Miss T046
 Mead Miss P042

BW	45
ADJ	530
WW	
ADJ	990
YW	
FRAME	

CED	BW	WW	YW	RADG	SC	HP	CEM	Milk
11	1	68	122	0.26	0.52	16.3	12	26
15%	45%	30%	30%	45%	75%	10%	15%	50%
Doc	CW	Marb	RE	Fat	\$M	\$W	\$B	\$C
24	59	0.51	0.44	0.036	71	61	149	264
25%	25%	65%	80%	85%	30%	40%	35%	30%

CED	BW	WW	YW	SC	Doc	HP	CEM	Milk	CW	Marb	RE	Fat

Consigner: Voss Angus David Voss 314-420-0241
 Really nice bull stemming back from Image Maker. Show-Me-Select calving ease with Top 30% growth. Note the maternal traits on this bull TOP 10% Heifer Pregnancy, Top 15% Calving Ease Maternal, Top 25% Docility and Top 30% \$M. A stout bull that will make excellent calves for retaining.



H A IMAGE MAKER 0415
PATERNAL GRANDSIRE OF LOT 1

2 SINNING'S EMERALD H83

Bull DOB: 12/27/20 Tattoo: H83 Reg: 20370174

Connealy Confidence Plus
Connealy Emerald
 Jace of Conanga 6571
 Connealy Western Cut
Sinning's Gammer B83
 Sinning's Gammer X50

BW	77
ADJ	
WW	
ADJ	
YW	
FRAME	

CED	BW	WW	YW	RADG	SC	HP	CEM	Milk
9	-0.8	60	100	0.23	1.3	12	12	26
30%	15%	55%	65%	70%	25%	50%	15%	50%
Doc	CW	Marb	RE	Fat	\$M	\$W	\$B	\$C
18	26	0.72	0.72	0.017	72	65	123	232
55%	95%	40%	35%	60%	25%	30%	70%	60%

ANGUS GS

CED	BW	WW	YW	SC	Doc	HP	CEM	Milk	CW	Marb	RE	Fat
20	12	64	91	15	49	63	20	50	74	35	29	60

Consigner: Sinning Cattle Company Chris Sinning 417-849-6417
 Sinning's Emerald is a proven calving ease bull an excellent disposition. He is good footed and easy keeping, small calves that grow into to deep bodied offspring that thrive on Missouri fescue. Sinning's are only offering him because they have held back so many of his excellent maternal quality sisters. Note his Top 25% \$M, Top 30% \$W, and TOP 15% Claw, CEM, and BW. Sleep easy with extremely docility and deluxe calving ease in this offering!



CONNEALY EMERALD
SIRE OF LOT 2

3 HAF EXPRESS 2030

Bull DOB: 12/28/20 Tattoo: 2030 Reg: 19936239

AAR Ten X 7008 S A
K BAR Express 9126
 K BAR 454 New Day 3023
 Deer Valley All In
Bridges All In 5114
 G A R Predestined 2418

BW	68
ADJ	
WW	775
ADJ	
YW	1284
FRAME	6.1

CED	BW	WW	YW	RADG	SC	HP	CEM	Milk
10	1.7	86	148	0.32	0.61	12.9	15	23
20%	65%	3%	5%	10%	70%	35%	2%	75%
Doc	CW	Marb	RE	Fat	\$M	\$W	\$B	\$C
21	68	1.18	0.66	0.035	69	76	192	318
40%	10%	10%	45%	80%	35%	10%	4%	3%

ANGUS GS

CED	BW	WW	YW	SC	Doc	HP	CEM	Milk	CW	Marb	RE	Fat
41	64	14	32	70	37	38	2	81	17	7	50	83

Consigner: Hudson Angus Farm Roland Hudson 573-338-2040
 Two year old bull used after AI on two groups of heifers. 2030 is calving ease with combination of EPDs that will be hard to find. 12 EPDs and \$Values TOP 10% or higher. Had a Yearling Adjusted scrotal of 40.04



HAF EXPRESS 2030
LOT 3

BULLS

4 HAF VICTORY 2104

Bull DOB: 08/23/21 Tattoo: 2104 Reg: 20281276

SydGen Enhance
RAR Revolution 8148
Woodside Rita 6569 of 5F56

K BAR Express 9126

HAF Royal Lass 1915

HAF Royal Lass 1709

BW	68
ADJ	869
WW	
ADJ	1376
YW	
FRAME	5.8

CED	BW	WW	YW	RADG	SC	HP	CEM	Milk
8	0.4	86	149	0.3	0.24	15.2	14	32
35%	30%	3%	4%	15%	90%	15%	4%	15%
Doc	CW	Marb	RE	Fat	\$M	\$W	\$B	\$C
24	55	0.86	0.72	0.012	68	87	160	276
25%	35%	25%	35%	50%	35%	1%	25%	20%

HD50K

CED	BW	WW	YW	SC	Doc	HP	CEM	Milk	CW	Marb	RE	Fat
41	41	11	24	84	35	22	5	38	46	29	46	54

Consigner: Hudson Angus Farm Roland Hudson 573-338-2040
2104 is a Calving Ease bull with EXCELLENT growth TOP 3% WW and TOP 4% YW. Daughters will raise calves with +30 Milk. \$Beef is +160 Top 25%. Out of a first calf heifer. Yearling Adjusted scrotal of 38.62



**HAF EXPRESS 2104
LOT 4**

5 KELLEY SIGNAL 9J

Bull DOB: 8/23/21 Tattoo: 9J Reg: 20177175

Basin Payweight 1682
V A R Signal 7244
PF CC&7 Henrietta Pride 1044

Mill Bar Hickok 7242

Kelley Star 12E

Kelley Star 2A

BW	72
ADJ	
WW	
ADJ	
YW	
FRAME	

CED	BW	WW	YW	RADG	SC	HP	CEM	Milk
7	1.3	81	146	0.33	1.63	17.5	12	27
45%	55%	10%	10%	4%	10%	3%	15%	45%
Doc	CW	Marb	RE	Fat	\$M	\$W	\$B	\$C
28	62	0.8	0.65	-0.012	79	76	168	297
10%	20%	30%	45%	20%	15%	10%	15%	10%

HD50K

CED	BW	WW	YW	SC	Doc	HP	CEM	Milk	CW	Marb	RE	Fat
45	44	5	7	12	11	3	21	37	6	30	48	42

Consigner: Kelley Cattle Company Kent Kelley 417-274-7300
Really nice V A R Signal son that stems back to the excellent Hickok bull. He is Show-Me-Select calving ease with monster growth BOTH TOP 10% WW & YW. Be sure to circle the amazing traits he will pass on to his daughters, TOP 3% Heifer Pregnancy on top of that look at that scrotal he will pass on to his sons TOP 10% Scrotal. Top 10% Docility and TOP 10% \$W. Check him out on sale day as this bull hits all the marks!



**V A R SIGNAL 7244
SIRE OF LOT 5**

**Ring Side
Phone Bidding Available**

**Brett Sayre
573-881-1876**

**Scott Crawford
816-804-1410**

**Drew Simon
417-838-2521**

**James Hayes
417-254-1699**

6 KELLEY IRON HORSE 8J

Bull DOB: 8/23/21 Tattoo: 8J Reg: 20177291

EXAR Stallion 7986
Bigk/WSC Iron Horse 025F
EXAR Henrietta Pride 5702

V A R Generation 2100

CSc 0209 Lucy E11

Lone Oaks Lucy 178E II 0209

BW	65
ADJ	
WW	
ADJ	
YW	
FRAME	

CED	BW	WW	YW	RADG	SC	HP	CEM	Milk
11	1	75	134	0.33	1.04	9.1	15	20
15%	45%	15%	15%	4%	40%	85%	2%	90%
Doc	CW	Marb	RE	Fat	\$M	\$W	\$B	\$C
26	54	0.72	0.95	-0.049	53	63	165	267
15%	35%	40%	10%	2%	80%	35%	20%	25%

HD50K

CED	BW	WW	YW	SC	Doc	HP	CEM	Milk	CW	Marb	RE	Fat
19	32	18	12	45	20	82	24	86	25	39	8	3

Consigner: Kelley Cattle Company Kent Kelley 417-274-7300
A very nice Iron Horse son, going back to the VAR Generation bull this bull has a stacked pedigree! Double digit calving ease with TOP 15% Weaning and Yearling Growth! Note the Docility and \$W values on this bull as he will make excellent calves that docile and gain well with his TOP 4% Residual Average Daily Gain.



**BIGK/WSC IRON HORSE 025F
SIRE OF LOT 6**



7 KELLEY PLUS ONE 10J

Bull DOB: 8/23/21 Tattoo: 10J Reg: 20179591

Connealy Confidence Plus
E&B Plus One
 E&B Lady 1023 Precision 936
 Kelley Ten X 4506
Kelley Star 10G
 Kelley Star 12E

BW	58
ADJ	
WW	
ADJ	
YW	
FRAME	

CED	BW	WW	YW	RADG	SC	HP	CEM	Milk
7	1.1	64	122	0.3	0.99	8.8	9	28
45%	50%	45%	30%	15%	45%	85%	40%	35%
Doc	CW	Marb	RE	Fat	\$M	\$W	\$B	\$C
17	57	0.7	0.88	0.026	47	62	168	265
60%	30%	40%	15%	70%	90%	35%	15%	30%

HD50K

CED	BW	WW	YW	SC	Doc	HP	CEM	Milk	CW	Marb	RE	Fat
14	14	39	20	23	48	51	50	46	12	14	17	76

Consigner: Kelley Cattle Company Kent Kelley 417-274-7300
 A very phenotypical bull with a very good pedigree, note the E&B Plus One, Confidence Plus and Ten X. Show-Me-Select calving ease with Top 30% Yearling Weight and Carcass Weight. Note his Top 35% Milk. TOP 15% Residual Average Daily Gain, Ribeye and \$Beef. Be sure to check out this calving ease, sound, clean fronted bull on Sale day!



E&B PLUS ONE
SIRE OF LOT 7

8 GUFFEY'S REVELATION 329

Bull DOB: 08/27/21 Tattoo: 329 Reg: 20588344

Quaker Hill Rampage 0A36
V A R Revelation 6299
 Sandpoint Blackbird 8809
 HA Cowboy Up 5405
Deer Valley Barbara 7313
 Deer Valley Barbara 41105

BW	67
ADJ	
WW	
ADJ	
YW	
FRAME	

CED	BW	WW	YW	RADG	SC	HP	CEM	Milk
3	4.1	104	179	0.38	0.29	6.5	5	20
75%	95%	1%	1%	1%	85%	95%	80%	90%
Doc	CW	Marb	RE	Fat	\$M	\$W	\$B	\$C
22	85	0.64	1.24	-0.042	59	79	195	312
35%	1%	50%	1%	3%	65%	5%	3%	4%

HD50K

CED	BW	WW	YW	SC	Doc	HP	CEM	Milk	CW	Marb	RE	Fat
90	94	1	2	83	22	89	86	90	2	55	1	3

Consigner: Guffey Farm Stacy & Stephanie Guffey 417-372-2903
 If growth and cow power is what you're looking for in a sire, Guffey's Revelation 329 has 15 epd's in the top 5% or better, 8 of which are in the top 1%. If you're looking for a bull that has grow power, with a WW +104, YW +179, Revelation 329 has a super docile attitude and sound foundation. 329 is backed by an incredible cow lineage. Going back to Sandpoint Blackbird 8809, the second-highest selling cow in Angus history with a valuation of \$500,000, plus his maternal granddam, Barbara of Plattmere 337 is the dam to Plattmere Weigh Up K360.



GUFFEY'S REVELATION 329
LOT 8

9 WRR ACCLAIM 150

Bull DOB: 09/04/21 Tattoo: 150 Reg: 20358206

Jindra 3rd Dimension
Jindra Acclaim
 Jindra Blackbird Lassy 1111
 A A R Ten X 7008 S A
WRR Lady Pride 306
 WRR Lady Impression 009

BW	61
ADJ	681
WW	
ADJ	1039
YW	
FRAME	6.6

CED	BW	WW	YW	RADG	SC	HP	CEM	Milk
7	1.1	57	105	0.26	0.21	11.9	12	23
45%	50%	65%	60%	45%	90%	50%	15%	75%
Doc	CW	Marb	RE	Fat	\$M	\$W	\$B	\$C
18	46	1.08	0.38	0.047	41	48	165	255
55%	55%	15%	85%	90%	95%	75%	20%	40%

HD50K

CED	BW	WW	YW	SC	Doc	HP	CEM	Milk	CW	Marb	RE	Fat
59	67	54	43	81	41	61	18	68	38	15	88	97

Consigner: Wiles Ridge Ranch Truman Wiles 417-252-0726
 Nice thick smooth son of the Accelerated AI Sire Acclaim. He is a Show-Me-Select qualified bull. An excellent bull to put some carcass traits in your calves. His 1.08 MARB EPD puts him in the top 15% for marbling EPD. His 165 \$BEEF VALUE places him in the TOP 20%. His dam average birth weight on her calves is 62 lbs. His dam is a thick good milking Ten X daughter. The Acclaim bulls have consistently placed good weaning pounds on their calves.



WRR ACCLAIM 150
LOT 9

BULLS

10 WRR MVP 163

Bull DOB: 09/08/21 Tattoo: 163 Reg: 20357426

Basin Payweight 1682

B/R MVP 5247

B/R Blossom 3254

Poss Total Impact 745

WRR Forever Lassie 235

WRR Lady Destination 458

BW	53
ADJ	650
WW	
ADJ	1047
YW	
FRAME	6.8

CED	BW	WW	YW	RADG	SC	HP	CEM	Milk
10	-0.8	55	89	0.19	0.88	11.4	16	27
20%	15%	70%	85%	90%	50%	55%	1%	45%
Doc	CW	Marb	RE	Fat	\$M	\$W	\$B	\$C
19	31	0.83	0.33	0.039	66	60	129	233
50%	90%	30%	90%	85%	40%	40%	65%	60%

ANGUS GS

CED	BW	WW	YW	SC	Doc	HP	CEM	Milk	CW	Marb	RE	Fat
36	19	50	84	52	59	47	8	35	58	24	76	78

Consigner: Wiles Ridge Ranch Truman Wiles 417-252-0726
Heavy muscled, well balanced son of ST Genetics sire MVP. He is a Show-Me Select qualified bull with a Top 20% CED and -0.8 BW which places him in the best 15% for a small BW EPD. His dam has had 9 calves with a 369 day calving interval. She has been an extremely productive big capacity cow. The average BW on her calves is 63 lbs. Note his TOP 1% CEM, excellent maternal qualities in this package. Look him over you will like how slick he is and how good his feet and legs are.



WRR MVP 163
LOT 10

Online Bidding Available
www.LiveWireAuction.com

11 WRR ENHANCE 166

Bull DOB: 09/11/21 Tattoo: 166 Reg: 20219706

SydGen Exceed 3223

SydGen Enhance

SydGen Rita 2618

OZH Rampage 59R1

OZH Blackcap 7640

OZH Ten X Blackcap 432T

BW	
ADJ	
WW	
ADJ	
YW	
FRAME	5.8

CED	BW	WW	YW	RADG	SC	HP	CEM	Milk
10	1.9	87	157	0.32	0.42	10.8	6	29
20%	65%	3%	2%	10%	80%	65%	75%	30%
Doc	CW	Marb	RE	Fat	\$M	\$W	\$B	\$C
20	73	0.81	0.86	-0.026	54	79	180	287
45%	5%	30%	20%	10%	75%	5%	10%	15%

ANGUS GS

CED	BW	WW	YW	SC	Doc	HP	CEM	Milk	CW	Marb	RE	Fat
14	29	16	10	77	45	60	73	56	13	32	26	19

Consigner: BAR Angus Ranch Rob Price 314-974-5263
For a second year, BAR Angus Ranch is proud to offer 2 bulls to the Power & Performance sale. Both bulls have been raised together and fed together making them teammates for doing the best job building your herd. Our first bull WRR Enhance 166 is stacked for balanced performance. He boasts 5 epds in the top 5% of the breed including WW, YW & CW. 13 Epds in the top 10% including \$B, \$W \$F. He and his teammate are as gentle as the day. He moves and looks as good as his genomic profile. He is an AI son of the legendary Missouri Bull Sydgen Enhance. His Dam is the OZH Blackcap 7640 a proven cow that calved a 326 \$C heifer this year at the BAR Angus Ranch. If power and performance is what you are after this bull will deliver.



WRR ENHANCE 166
LOT 11

Videos Online

12 BEAU'S RAINFALL 2198

Bull DOB: 09/17/21 Tattoo: 2198 Reg: 20421397

Coleman Charlo 0256

S A V Rainfall 6846

S A V Blackcap May 4136

Hawk Prosperity 4015

Hawk Ms Blackbird 6119

Hawk Ms Blackbird 1074

BW	70
ADJ	
WW	775
ADJ	1103
YW	
FRAME	6.4

CED	BW	WW	YW	RADG	SC	HP	CEM	Milk
8	0.6	68	125	0.27	1.43	14.2	10	31
35%	35%	30%	25%	35%	20%	25%	30%	20%
Doc	CW	Marb	RE	Fat	\$M	\$W	\$B	\$C
9	44	0.46	0.44	0.001	74	72	124	235
90%	60%	70%	80%	35%	20%	15%	70%	60%

ANGUS GS

CED	BW	WW	YW	SC	Doc	HP	CEM	Milk	CW	Marb	RE	Fat
24	16	38	33	13	74	33	40	30	58	68	81	49

Consigner: Beau's Black Angus Beau Davis 417-880-6863
A really nice Rainfall bull with an out-cross pedigree. Check out that TOP row of Epd's EVERY single one of them is TOP 35% or better! Show-Me-Select calving ease and Top 25% Yearling Weight Growth. Look at the excellent fertility and maternal traits on this bull Top 20% SC, Top 25% HP, Top 30% CEM and TOP 20% Milk. This bull does it all, check him out on sale day as he hits all the marks and more!



S A V RAINFALL 6846
SIRE OF LOT 12



BULLS

13 VA SUNBEAM 1424

Bull DOB: 9/19/21 Tattoo: 1424 Reg: 20579937

G A R Sunrise
G A R Sunbeam
G A R Ingenuity 3132
SydGen Exceed 3223
Va Pleasant Pride E205
Gerloff Pleasant Pride Z045

BW	
ADJ	
WW	
ADJ	
YW	
FRAME	

CED	BW	WW	YW	RADG	SC	HP	CEM	Milk
14	-1.1	57	107	0.24	1.37	21.1	15	38
4%	10%	65%	55%	60%	20%	1%	2%	2%
Doc	CW	Marb	RE	Fat	\$M	\$W	\$B	\$C
27	51	1.18	0.72	0.049	88	68	170	308
15%	45%	10%	35%	95%	3%	25%	15%	5%

ANGUS GS

CED	BW	WW	YW	SC	Doc	HP	CEM	Milk	CW	Marb	RE	Fat
7	17	78	54	27	21	1	7	5	50	6	47	93

Consigner: Voss Angus David Voss 314-420-0241
Sunbeam calves are known for their calving ease, growth, and carcass merit fused with superior foot quality and disciplined stature and this bull embodies all those traits! Check out his Double Digit Calving ease, Top 15% Docility, and TOP 10% Marb. Look at the maternal traits on this bull and think about what it can do for your program TOP 2% CEM & MILK and TOP 1% +21.1 HEIFER PREGNANCY. All that in +308 TOP 5% \$C package. Circle this one he aims to please.



**G A R SUNBEAM
SIRE OF LOT 13**

14 SMITH VALLEY GRATITUDE 1543

Bull DOB: 9/22/21 Tattoo: Reg: 20158451

BUBS Southern Charm AA31
Smith Valley Gratitude
Smith Valley Blackbird 6908
V A R Discovery 2240
SVA Henrietta Pride 6281
PF CC&7 Henrietta Pride 1044

BW	70
ADJ	
WW	932
ADJ	
YW	1327
FRAME	

CED	BW	WW	YW	RADG	SC	HP	CEM	Milk
9	2.3	91	159	0.3	2.03	15.2	9	31
30%	75%	2%	2%	15%	3%	15%	40%	20%
Doc	CW	Marb	RE	Fat	\$M	\$W	\$B	\$C
12	76	0.47	1.25	0.004	70	85	170	290
80%	4%	70%	1%	40%	30%	2%	15%	15%

ANGUS GS

CED	BW	WW	YW	SC	Doc	HP	CEM	Milk	CW	Marb	RE	Fat
31	60	8	8	5	53	30	54	25	10	54	2	44

Consigner: Smith Valley Angus Kim & Brian Smith 573-729-2910
SVA Henrietta Pride 6281, one of the best Donors we have had on our farm. Smith Valley Gratitude 9003, one of the best bulls raised on our farm. What a mating!!! Powerhouses on both sides, this ET bull comes from the \$21,000 dam bought from Steve Zybach and the \$25,000 2/3's purchase of ABS Beef in our 2020 Production Sale. If you want depth of body, easy calving and great growth - this is the bull! His EPD's are outstanding: WW top 2%, YW top 2%, RADG top 15%, SC top 3%, HP top 15%, CW top 4%, RE top 1%, \$W top 2%, \$B & \$C top 15%. This is a great bull with the pedigree, phenotype, and genomic package to back him up!



**SVA HENRIETTA PRIDE 6281
DAM OF LOT 14**



**SMITH VALLEY GRATITUDE
SIRE OF LOT 14**



**SMITH VALLEY GRATITUDE 1543
LOT 14**

15 SEAGRAVES FIREBALL 2190

Bull DOB: 9/25/21 Tattoo: 2190 Reg: 20445714

G A R Sure Fire 6404
GB Fireball 672
GB Anticipation 432
V A R Discovery 2240
Seagraves Foreverlady 9414
Three Trees Foreverlady 2898

BW	77
ADJ	
WW	604
ADJ	
YW	990
FRAME	6.0

CED	BW	WW	YW	RADG	SC	HP	CEM	Milk
7	0.6	62	119	0.33	1.76	17.7	13	26
45%	35%	50%	35%	4%	10%	3%	10%	50%
Doc	CW	Marb	RE	Fat	\$M	\$W	\$B	\$C
20	50	2.04	0.94	0.025	77	58	223	366
45%	45%	1%	15%	70%	15%	50%	1%	1%

ANGUS GS

CED	BW	WW	YW	SC	Doc	HP	CEM	Milk	CW	Marb	RE	Fat
32	23	69	34	4	39	10	12	40	58	1	20	49

Consigner: Seagraves Angus Kevin Devore 618-339-0665
Sired by arguably the hottest bull in the Angus Breed right now GB FIREBALL 672. Show-Me-Select calving ease with excellent yearling growth and TOP 4% RADG! Note The Maternal Traits on this bull Top 10% CEM and TOP 3% Heifer Pregnancy. 21 of 22 FIREBALL steers in a recent structured progeny test graded Prime while also posting the largest rib eyes and heaviest carcass weights in a 98 head contemporary group. Now the really exciting info ... TOP 1% MARB +2.04, TOP 1% \$B +223 AND TOP 1% \$C +366. WOW!!



**SEAGRAVES FIREBALL 2190
LOT 15**



**SEAGRAVES FOREVERLADY 9414
DAM OF LOT 15**

BULLS

16 SMITH VALLEY HIGHWAYMAN 1552

Bull DOB: 9/25/21 Tattoo: 1552 Reg: 20170345

FF Highwayman 4W10
Smith Valley Highwayman 8134
KLR Rita 5024

Connealy Black Granite
PAR Blackcap 7100
Springfield Blackcap 9114

BW	68
ADJ WW	684
ADJ YW	1209
FRAME	

CED	BW	WW	YW	RADG	SC	HP	CEM	Milk
4	0.1	61	111	0.26	0.28	16.6	12	35
70%	25%	50%	50%	45%	85%	10%	15%	10%
Doc	CW	Marb	RE	Fat	\$M	\$W	\$B	\$C
18	54	0.95	0.4	0.007	79	69	164	292
55%	35%	20%	85%	45%	15%	20%	20%	10%

ANGUS GS

CED	BW	WW	YW	SC	Doc	HP	CEM	Milk	CW	Marb	RE	Fat
53	23	65	53	80	20	13	17	9	32	14	87	62

Consigner: Smith Valley Angus Kim & Brian Smith 573-729-2910
This bull has an outstanding pedigree!! It is deep with foundation Sires and Dams! His sire Smith Valley Highwayman 8134 came from one of our best bull making donors! Deep bodied, good footed, \$EN -16, HS in the top 30% and \$M 80 top 10%! This bull is solid!!



FF HIGHWAYMAN 4W10
PATERNAL GRANDSIRE OF LOT 16



RIVERBEND BLACKCAP S762
MATERNAL GREAT GRANDAM OF LOT16

17 DHT LATIVA CHARMER 407 A72

Bull DOB: 09/27/21 Tattoo: A72 Reg: 20496845

BUBS Southern Charm AA31
DHT Loa 833 Charmer 407
DHT Generation 626 Loa 833

Mead Magnitude
DHT Mag Queen Lativa 352
DHT 747 Rampage Queen 168

BW	78
ADJ WW	694
ADJ YW	1139
FRAME	6.0

CED	BW	WW	YW	RADG	SC	HP	CEM	Milk
11	1	89	160	0.3	1.75	13.4	14	23
15%	45%	2%	2%	15%	10%	30%	4%	75%
Doc	CW	Marb	RE	Fat	\$M	\$W	\$B	\$C
12	74	1.07	0.92	0.019	67	78	188	311
80%	5%	15%	15%	60%	40%	10%	5%	4%

ANGUS GS

CED	BW	WW	YW	SC	Doc	HP	CEM	Milk	CW	Marb	RE	Fat
15	52	3	2	12	67	23	8	81	7	20	11	55

Consigner: DHT Angus Cecil Huff 417-250-1300
Rarely do you find a bull that has calving ease, productivity and carcass value and works on both cows and heifers, and boast TOP 2% WW EPDs! He is a DOUBLE digit TOP 15% CED that grows into a TOP 2% +160 YW, all with a TOP 15% RADG feed efficiency EPD and top 2% yearling height. He is an attractive DHT Charmer 407 son. That has 5 of 6 \$Value in top 10% of breed. This bull will put pounds on your calves, and create females that you will want to retain in your herd (+13.4 HP Top 30% and TOP 4% CEM). Come see a bull that does it all. With \$C of \$311 Top 4% of breed.



DHT LOA 833 CHARMER 407
SIRE OF LOT 17

All buyers invited to view the sale animals
morning of sale day and evening before sale.

18 BEAU' PEDIGREE 2123A

Bull DOB: 10/02/21 Tattoo: 2123A Reg: 20411117

SA V Pedigree 4834
Hawk Pedigree 7511
Hawk Dividend 4E4

SA V Platinum 5350
Hawk Emblynnette 8104
Hawk Emblynnette 6473

BW	74
ADJ WW	819
ADJ YW	1172
FRAME	6.5

CED	BW	WW	YW	RADG	SC	HP	CEM	Milk
7	2.7	65	126	0.3	0.64	13.6	8	29
45%	85%	40%	25%	15%	65%	30%	55%	30%
Doc	CW	Marb	RE	Fat	\$M	\$W	\$B	\$C
17	57	0.27	1.13	-0.012	47	55	152	244
60%	30%	85%	3%	20%	90%	55%	30%	50%

ANGUS GS

CED	BW	WW	YW	SC	Doc	HP	CEM	Milk	CW	Marb	RE	Fat
57	82	29	10	70	56	24	84	12	13	91	2	18

Consigner: Beau's Black Angus Beau Davis 417-880-6863
Show-Me-Select Calving Ease with Top 25% Yearling Growth and TOP 15% Residual Average Daily Gain, feed efficiency. Note his adjusted weaning weight of 819 pounds! TOP 3% Ribeye! Pedigree offspring are known for their pedigree, phenotype and breed-leading EPD profile. 2123A genotyped very well be sure to circle his Top 10% YW, Top 24% HP, Top 12% Milk, Top 13% CW & TOP 2% RE. A really nice pedigree with lots of growth! Come check him out sale day!



S A V PEDIGREE 4834
PATERNAL GRANDSIRE OF LOT 18



19

HAF REVELATION 2121

Bull DOB: 10/19/21 Tattoo: 2121 Reg: 20279804

Quaker Hill Rampage 0A36

V A R Revelation 6299

Sandpoint Blackbird 8809

G A R Prophet

Bridges Prophet 5115

Deer Valley Rita 0274

BW	71
ADJ	
WW	777
ADJ	
YW	1201
FRAME	5.7

CED	BW	WW	YW	RADG	SC	HP	CEM	Milk
12	-0.2	75	133	0.29	0.56	12.4	12	30
10%	20%	15%	15%	20%	70%	45%	15%	25%
Doc	CW	Marb	RE	Fat	\$M	\$W	\$B	\$C
27	74	0.58	1.14	-0.029	70	76	179	302
15%	5%	55%	3%	10%	30%	10%	10%	10%

HD50K

CED	BW	WW	YW	SC	Doc	HP	CEM	Milk	CW	Marb	RE	Fat
48	43	8	12	73	9	38	80	37	2	68	2	9

Consigner: Hudson Angus Farm Roland Hudson 573-338-2040
2121 is a Calving Ease bull with good growth, Top 20% WW & Top 15% YW.
\$B & \$C are both TOP 10%. Milk is +30. Decants from Deer Valley Rita 0274.
Maternal Sister sold to Wheeler Angus in the Spring Sale. Yearling Adjusted
scrotal of 36.72

**HAF REVELATION 2121
LOT 19**

Join us Saturday Morning for donuts, coffee,
and cattle viewing.

20

HAF REVELATION 2122

Bull DOB: 10/22/21 Tattoo: 2122 Reg: 20279803

Quaker Hill Rampage 0A36

V A R Revelation 6299

Sandpoint Blackbird 8809

V A R Generation 2100

HAF Royal Lass 1615

HAF Royal Lass 1313

BW	67
ADJ	
WW	771
ADJ	
YW	1275
FRAME	5.8

CED	BW	WW	YW	RADG	SC	HP	CEM	Milk
9	1.6	74	122	0.25	1.32	14.6	9	28
30%	60%	20%	30%	50%	25%	20%	40%	35%
Doc	CW	Marb	RE	Fat	\$M	\$W	\$B	\$C
18	55	0.91	1.13	-0.014	73	74	170	293
55%	35%	25%	3%	20%	25%	10%	15%	10%

HD50K

CED	BW	WW	YW	SC	Doc	HP	CEM	Milk	CW	Marb	RE	Fat
68	72	30	54	24	46	14	69	46	46	24	5	14

Consigner: Hudson Angus Farm Roland Hudson 573-338-2040
Calving Ease with TOP 20% WW and TOP 30% YW. Milk Top 35%. \$B Top
15%. 2122 works well in all aspects of the cattle industry. Yearling Adjusted
scrotal of 38.85

**HAF REVELATION 2122
LOT 20**

21

BAR KING LLOYD 7

Bull DOB: 12/23/21 Tattoo: 7 Reg: 20403306

SydGen Enhance

BAR Enhance

WRR Lady Erica 748

V A R Signal 7244

WSC Elia G341

Byergo Elia Cupcake 6130

BW	73
ADJ	
WW	
ADJ	
YW	
FRAME	5.5

CED	BW	WW	YW	RADG	SC	HP	CEM	Milk
8	1.3	83	151	0.34	0.56	14.6	7	26
35%	55%	5%	4%	3%	70%	20%	65%	50%
Doc	CW	Marb	RE	Fat	\$M	\$W	\$B	\$C
32	75	1.16	0.77	0.015	69	75	203	332
3%	4%	10%	30%	55%	35%	10%	2%	2%

ANGUS CS

CED	BW	WW	YW	SC	Doc	HP	CEM	Milk	CW	Marb	RE	Fat
45	53	18	7	65	1	21	59	71	3	6	32	61

Consigner: BAR Angus Ranch Rob Price 314-974-5263
For a second year, BAR Angus Ranch is proud to offer 2 bulls to the Power
& Performance sale. Both bulls have been raised together and fed together
making them teammates for doing the best job building your herd. Our second
bull BAR King Lloyd 7 is stacked for superior performance. He boasts a
whopping total of 10 epds in the top 5% of the breed including WW, YW, CW,
Docility, B\$ & C\$. 13 Epds in the top 10% including Marble, \$W & \$G. He
and his teammate are as gentle as the day. He moves and looks as good as
his genomic profile. He is a natural bred son from an AI son of the legendary
Missouri Bull Sydgen Enhance. His Dam is the WSC Elia G341 a proven cow
that boasts 11 epds in the top 5% of the breed. If power and performance is
what you are after this bull will deliver.

**BAR KING LLOYD 7
LOT 21**

22 VA EMERALD J520

Bull DOB: 01/25/22 Tattoo: J520 Reg: 20580104

Connealy Confidence Plus

Connealy Emerald

Jace of Conanga 6571

Bruns Brushpopper 131

Circle A Miss Blackbird 3603

Circle A Miss Blackbird 1008

BW	
ADJ	
WW	
ADJ	
YW	
FRAME	

CED	BW	WW	YW	RADG	SC	HP	CEM	Milk
6	0.1	62	111	0.31	1.05	18.2	2	28
55%	25%	50%	50%	10%	40%	2%	95%	35%
Doc	CW	Marb	RE	Fat	\$M	\$W	\$B	\$C
28	40	0.43	0.98	-0.044	78	63	138	257
10%	70%	70%	10%	2%	15%	35%	50%	35%

ANGUS GS

CED	BW	WW	YW	SC	Doc	HP	CEM	Milk	CW	Marb	RE	Fat
32	8	63	65	45	10	5	92	43	55	73	7	2

Consigner: Voss Angus David Voss 314-420-0241

Very Nice Emerald Son, with a balanced set up numbers! Check out the Genomics on this bull TOP 8% BW, TOP 7% RE and TOP 2% Fat. Excellent Heifer Pregnancy TOP 2%. Jace of Conanga 6571 was the ultra-stylish female who was selected as the "Pick of the Dams" from the Connealy Sale. Note his Top 35% \$W & \$C as well as Top 15% \$M.

**CONNEALY EMERALD
SIRE OF LOT 22****23 TEKO K2201 EXPLOSIVE**

Bull DOB: 02/14/22 Tattoo: K201 Reg: 20337614

Casino Bomber N33

K C F Bennett Exponential

K C F Miss Southside B226

MW DNAmite

Teko K2003 Blackbird

Bakers Blackbird 8022

BW	70
ADJ	
WW	749
ADJ	
YW	1322
FRAME	6.8

CED	BW	WW	YW	RADG	SC	HP	CEM	Milk
8	0.7	87	156	0.3	0.52	15.9	7	35
35%	40%	3%	2%	15%	75%	10%	65%	10%
Doc	CW	Marb	RE	Fat	\$M	\$W	\$B	\$C
30	84	0.79	1.31	-0.033	84	89	202	346
5%	1%	30%	1%	5%	10%	1%	2%	1%

ANGUS GS

CED	BW	WW	YW	SC	Doc	HP	CEM	Milk	CW	Marb	RE	Fat
52	48	5	2	61	3	28	75	12	1	32	1	7

Consigner: TeKo Farm Ted Koontz 417-839-3960

Are you ready to explode into the future with your next generation of genetics. Teko Explosive will do it. He came about by careful planned matings. So his top 13 EPDs in the top 5% are a result. Targeting The Brand carcass traits and heifer qualified as well. Top angus on dairy will make him popular with the dairy industry. Also a genomic tenderness score of 16, RE 1 and Fat 7. Unlimited potential for feeders. Don't overlook maternal HP EPd top 15%. Milk EPd 10%. Semen available soon.

**TEKO K2201 EXPLOSIVE
LOT 23****K C F BENNETT EXPONENTIAL
SIRE OF LOT 23****24 E-LEE GROWTH FUND LARRY 2023**

Bull DOB: 03/16/22 Tattoo: 2023 Reg: 20384389

Basin Payweight 1682

Deer Valley Growth Fund

Deer Valley Rita 36113

Rito 9Q13 of Rita 5F56 GHM

DCF Lucy 3661

44 Lucy 1297

BW	78
ADJ	
WW	541
ADJ	
YW	1155
FRAME	6.2

CED	BW	WW	YW	RADG	SC	HP	CEM	Milk
4	3.6	83	158	0.36	1.04	11.9	8	28
70%	95%	5%	2%	1%	40%	50%	55%	35%
Doc	CW	Marb	RE	Fat	\$M	\$W	\$B	\$C
5	89	0.66	0.47	0.059	45	66	194	297
95%	1%	45%	75%	95%	25%	3%	10%	

ANGUS GS

CED	BW	WW	YW	SC	Doc	HP	CEM	Milk	CW	Marb	RE	Fat
28	58	7	2	30	83	21	26	72	2	31	76	90

Consigner: E-Lee Angus Don Ely 417-830-7530

Basin Lucy 3829, as the third dam on his maternal side, is also the fourth dam of the sire of Basin Jameson, whose semen has sold for record prices. His sire, Growth Fund is the ONLY sire in the breed that combines +9 CED and +90 WW EPD's with at least 88% accuracy, for assured calving ease and growth. Note his TOP 5% WW, TOP 2% YW, TOP 1% CW and TOP 1% RADG. Excellent growth & carcass numbers on top of that Larry has a classy, showy look to sire calves that grow fast with lots of eye appeal!

**E-LEE GROWTH FUND LARRY 2023
LOT 24****E-LEE GROWTH FUND LUCY 2022
FULL SISTER LOT 24**

30

WRR FOREVER LASSIE 651

Cow DOB: 09/08/16 Tattoo: 651 Reg: 18709034

B/R Future Direction 4268

WR Journey-1X74

2 Bar 5050 New Design 7831

B/R Destination 727-928

WRR Forever Lassie 176

WRR Lady Nobleman 742

BW	65
ADJ	607
WW	
ADJ	817
YW	

CED	BW	WW	YW	RADG	SC	HP	CEM	Milk
6	0.3	58	101	0.24	0.39	8.9	12	22
50%	30%	45%	45%	40%	80%	85%	15%	80%
Doc	CW	Marb	RE	Fat	\$M	\$W	\$B	\$C
21	46	1.09	0.88	0.009	43	52	176	271
25%	30%	5%	10%	45%	90%	55%	4%	15%

150K

CED	BW	WW	YW	SC	Doc	HP	CEM	Milk	CW	Marb	RE	Fat
68	56	62	64	63	37	87	11	75	43	11	22	60

Consigner: Wiles Ridge Ranch Truman Wiles 417-252-0726

Big thick easy fleshing Journey daughter. This cow has a perfect udder and is a great milking EPD that places her in the TOP 5%. She has a 176 \$BEEF that places her in the top 4% of the breed. She has a 271 \$C that places her in the top 15% of the breed. She has had 5 calves at a 368 day calving interval. Her calves have had a 104 weaning weight ratio and a 106 yearling weight ratio. Her calves have averaged 61lbs. at birth. Just look at her heifer calf at side to see her productive ability. Bred 12/08/2022 to ABS AI Sire WILKS NO SUBSTITUTE 2358 Reg # 19720337

**WRR FOREVER LASSIE 651
LOT 30****WILKS NO SUBSTITUTE 2358
SERVICE SIRE FOR LOT 30**

30A

WRR FOREVER LASSIE 236

Cow DOB: 09/09/22 Tattoo: 236 Reg: 20573899

Basin Payweight 1682

Deer Valley Growth Fund

Deer Valley Rita 36113

WR Journey-1X74

WRR Forever Lassie 651

WRR Forever Lassie 176

BW	
ADJ	
WW	
ADJ	
YW	

CED	BW	WW	YW	RADG	SC	HP	CEM	Milk
6	0.8	84	145	0.3	0.36	12.3	10	25
55%	40%	4%	10%	20%	80%	40%	30%	60%
Doc	CW	Marb	RE	Fat	\$M	\$W	\$B	\$C
19	64	0.65	0.81	0.028	66	79	164	279
45%	20%	50%	25%	75%	40%	4%	20%	20%

HD50K

CED	BW	WW	YW	SC	Doc	HP	CEM	Milk	CW	Marb	RE	Fat
60	39	7	24	81	40	44	16	46	19	32	50	92

Consigner: Wiles Ridge Ranch Truman Wiles 417-252-0726

Tremendous is the only word to describe this heifer. For the second year of the Power Performance Sale I looked to pick my best fall heifer for this sale. She is +84 WW TOP 4% and +145 YW TOP 10%. Anywhere you look at her in the field she looks perfect. She will have weaning performance data for the sale.

**WRR FOREVER LASSIE 236
LOT 30A**

*All buyers invited to view the sale animals
morning of sale day and evening before sale.*

FALL PAIRS

31

WRR FOREVER LASSIE 878

Cow DOB: 10/10/18 Tattoo: 878 Reg: 19312795

WRR Destination 178
WRR Trueblood 468
WRR Forever Lassie 173
K C F Bennett Southside
WRR Forever Lassie 649
WRR Forever Lassie 331

BW	51
ADJ	703
WW	
ADJ	1025
YW	

CED	BW	WW	YW	RADG	SC	HP	CEM	Milk
7	1.2	74	128	0.26	1.14	18.9	12	25
40%	50%	10%	10%	25%	25%	1%	15%	60%
Doc	CW	Marb	RE	Fat	\$M	\$W	\$B	\$C
26	51	0.74	0.44	0.005	86	70	148	278
10%	20%	25%	60%	40%	2%	10%	25%	10%

ANGUS GS

CED	BW	WW	YW	SC	Doc	HP	CEM	Milk	CW	Marb	RE	Fat
75	64	29	52	34	16	8	32	56	27	40	51	29

Consigner: Wiles Ridge Ranch Truman Wiles 417-252-0726

Super productive big growth, long-bodied True Blood daughter. If you looking to add \$M value to your program, look no farther. She is a 86 \$M value cow which places her in the top 2% of the breed. She has a 74 WW EPD Top 10%, and a 128 YW EPD Top 10%. She has that level of growth with 7 CED, these are the kind of numbers that will produce popular bulls. She has a Top 10% 278 \$C. She has had 3 calves at a 358 day calving interval, and she had her first calf at 23 months of age. Top of the line productivity for this nice 4 year old cow. Bred 12/08/2022 to ABS AI Sire TAR DOMINANCE 0031 Reg # 19719061



WRR FOREVER LASSIE 878
LOT 31



WRR TRUEBLOOD 468
SIRE OF LOT 31

31A

WRR FOREVER LASSIE 245

Cow DOB: 09/14/22 Tattoo: 245 Reg: 20573896

Bar R Jet Black 5063
LAR Man In Black
JMB Maxine TG 2131
WRR Trueblood 468
WRR Forever Lassie 878
WRR Forever Lassie 649

BW	
ADJ	
WW	
ADJ	
YW	

CED	BW	WW	YW	RADG	SC	HP	CEM	Milk
11	0.4	68	123	0.25	1.29	14.3	13	33
15%	30%	30%	25%	55%	25%	20%	10%	10%
Doc	CW	Marb	RE	Fat	\$M	\$W	\$B	\$C
24	54	1.15	0.57	0.043	81	73	166	296
25%	35%	10%	60%	90%	10%	10%	20%	10%

HO5DK

CED	BW	WW	YW	SC	Doc	HP	CEM	Milk	CW	Marb	RE	Fat
23	32	26	27	12	31	28	36	27	14	7	41	84

Consigner: Wiles Ridge Ranch Truman Wiles 417-252-0726

Fantastic MAN IN BLACK heifer that does it right in lots of categories. She has a \$M value of 81 TOP 10%. She has a \$C value of 296 TOP 10%. She has a 33 MILK EPD TOP 10%. She has a 13 CEM EPD TOP 10%. Then note the foot scores she has a .38 claw score and a .47 angle score. She also has a 1.15 MARB EPD TOP 10%. She will have weaning performance data for the sale. Great chance to add an early MAN IN BLACK heifer to your herd.



LAR MAN IN BLACK
SIRE OF 31A



TAR DOMINANCE 0031
SERVICE SIRE FOR LOT 31

S
R
E
A
D
L
A
E

Pictures &
Videos Online

FALL PAIRS

32 SINNING'S HEATHERBLOOM F97

Cow DOB: 11/13/18 Tattoo: F97 Reg: 19426648

PVF Insight 0129

Pleasant Valley Insight 1504

Pleasant Valley Elsa 1209

EXAR Blue Chip 1877B

Sinning's Heatherbloom D88

Sinning's Heatherbloom Y55

BW	48
ADJ	
WW	
ADJ	
YW	

CED	BW	WW	YW	RADG	SC	HP	CEM	Milk
7	0.6	54	92	1*0.23	1*0.89	1*13	11	26
45%	35%	70%	80%	52%	43%	33%	20%	50%
Doc	CW	Marb	RE	Fat	\$M	\$W	\$B	\$C
1*12	1*34	1*39	1*0.47	1*0.034	1*55	52	1*117	1*206
72%	67%	65%	60%	81%	65%	60%	68%	72%

CED	BW	WW	YW	SC	Doc	HP	CEM	Milk	CW	Marb	RE	Fat

Consigner: Sinning Cattle Company Chris Sinning 417-849-6417
Here is a cow in her prime with a very nice stout bull calf at side. This cow was Addy's first show heifer. This is a moderate phenotypically pleasing cow. If you are looking to expand your herd, don't miss out on this cow to take home.



PVF INSIGHT 0129
PATERNAL GRANDSIRE OF LOT 32

32A SINNING'S MERLE L97

Bull DOB: pending Tattoo: Reg: pending



K C F BENNETT EXPONENTIAL
SERVICE SIRE OF LOT 33

33 A A ROYAL LASS 59

Cow DOB: 09/12/19 Tattoo: 59 Reg: 19630332

SydGen Exceed 3223

SydGen Enhance

SydGen Rita 2618

SydGen Rock Star 3461

A A Royal Lass 58

SydGen Royal Lass 4729

BW	62
ADJ	
WW	593
ADJ	
YW	918

CED	BW	WW	YW	RADG	SC	HP	CEM	Milk
3	2.1	73	141	0.32	0.78	14.2	4	33
75%	70%	10%	3%	3%	50%	20%	85%	15%
Doc	CW	Marb	RE	Fat	\$M	\$W	\$B	\$C
18	66	0.76	0.79	0.005	51	67	170	271
40%	4%	25%	15%	40%	75%	15%	10%	15%

ANGUS GS

CED	BW	WW	YW	SC	Doc	HP	CEM	Milk	CW	Marb	RE	Fat
67	50	54	10	58	37	24	66	19	26	40	35	45

Consigner: Allegro Angus Craig Stephenson 417-894-4285

This three year old Enhance daughter, nursing her second calf, has 16 EPDs in the TOP 15% or better. Note her own ratios VVW 107 and YW 109. As well as her progeny record on her first calf, which was the top indexing calf at Allegro last year. BW 2@79 lbs, (Weaning Ratio) WR 1@110, (Yearling Ratio) YR 1@110. This cow stems from a very productive cow family. She is rebred on 1/5/23 to KCF Bennett Exponential (19507801) due 10/15/23.



A A ROYAL LASS 59
LOT 33

33A A A VOLUNTEER 132

Bull DOB: 11/10/22 Tattoo: 132 Reg: 20524991

E W A Peyton 642

DE-SU Volunteer B122

E W A 3128 of 9067 Weigh Up

SydGen Enhance

A A Royal Lass 59

AA Royal Lass 58

BW	82
ADJ	
WW	
ADJ	
YW	

CED	BW	WW	YW	RADG	SC	HP	CEM	Milk
7	1.4	78	149	0.31	1.1	12.2	5	34
45%	55%	10%	4%	10%	35%	45%	80%	10%
Doc	CW	Marb	RE	Fat	\$M	\$W	\$B	\$C
24	73	1.17	0.48	-0.009	52	74	190	298
25%	5%	10%	75%	25%	80%	10%	4%	10%

ANGUS GS

CED	BW	WW	YW	SC	Doc	HP	CEM	Milk	CW	Marb	RE	Fat
67	77	37	3	29	16	20	76	6	7	14	58	10

Consigner: Allegro Angus Craig Stephenson 417-894-4285

AA Royal Lass 59 bull calf by De-Su Volunteer B133 should catch your attention! He has 13 EPDs in the Top 10% or better, enhanced by his genomic scores. Be sure to look up his numbers. He should be one of the few Volunteer Progeny offered this spring.



A A VOLUNTEER 132
LOT 33A



DE-SU VOLUNTEER B122
SIRE OF LOT 33A

SEATTLE

FALL PAIRS

34 KELLEY STAR 10G

Cow DOB: 9/15/19 Tattoo: 10G Reg: 19841372

A A R Ten X 7008 S A
Kelley Ten X 4506
Spruce Mtn Lucy 2638
Mill Bar Hickok 7242
Kelley Star 12E
Kelley Star 2A

BW	65
ADJ	
WW	
ADJ	
YW	

CED	BW	WW	YW	RADG	SC	HP	CEM	Milk
10	0.6	72	132	0.31	1.23	12.2	10	31
20%	35%	10%	10%	4%	20%	40%	30%	20%
Doc	CW	Marb	RE	Fat	\$M	\$W	\$B	\$C
23	57	0.87	0.44	0.051	60	74	163	271
20%	15%	15%	60%	95%	50%	5%	10%	15%

HD50K

CED	BW	WW	YW	SC	Doc	HP	CEM	Milk	CW	Marb	RE	Fat
18	31	13	11	21	19	41	44	26	12	18	72	93

Consigner: Kelley Cattle Company Kent Kelley 417-274-7300
Really nice female with an excellent spread of numbers, note her double digit calving ease and TOP 10% WW and YW Growth. Tremendous feed efficiency with TOP 4% RADG. Top 15% for both MARB and CW. Top 20% Docility and Milk. Really neat pedigree with both Hickok and Ten X. Check out this female on sale day! AI Bred 11/19/22 V A R Signal 7244 (Reg # 18748511)

35 KELLEY LUCY 17G

Cow DOB: 9/15/19 Tattoo: 17G Reg: 19838421

A A R Ten X 7008 S A
Kelley Ten X 4506
Spruce Mtn Lucy 2638
S S Objective T510 0T26
Lucy 9028 of N947-178E
Basin Lucy N947

BW	65
ADJ	
WW	
ADJ	
YW	

CED	BW	WW	YW	RADG	SC	HP	CEM	Milk
6	2.1	61	115	0.27	0.5	7.6	8	17
50%	70%	35%	25%	20%	70%	95%	50%	95%
Doc	CW	Marb	RE	Fat	\$M	\$W	\$B	\$C
-2	48	1.05	0.3	0.033	33	43	157	237
95%	25%	10%	80%	80%	95%	80%	15%	40%

HD50K

CED	BW	WW	YW	SC	Doc	HP	CEM	Milk	CW	Marb	RE	Fat
73	78	26	20	68	96	84	65	96	20	6	88	86

Consigner: Kelley Cattle Company Kent Kelley 417-274-7300
Checked out this stacked pedigree stemming back to Ten X and the great Basin Lucy 178E donor who sold for \$440,000 and has created numerous donors. A very balanced set of EPDs with TOP 25% YW, TOP 25% CW and TOP 10% Marb. Note her Top 15% \$B. AI Bred 11/19/22 V A R Signal 7244 (Reg # 18748511)

34A KELLEY STAR 2K

Cow DOB: 8/19/22 Tattoo: 2K Reg: 20512459

EXAR Stallion 7986
Bigk/WSC Iron Horse 025F
EXAR Henrietta Pride 5702
Kelley Ten X 4506
Kelley Star 10G
Kelley Star 12E

BW	58
ADJ	
WW	
ADJ	
YW	

CED	BW	WW	YW	RADG	SC	HP	CEM	Milk
10	0.8	77	148	0.37	1.28	11.1	13	31
20%	40%	10%	4%	1%	25%	55%	10%	20%
Doc	CW	Marb	RE	Fat	\$M	\$W	\$B	\$C
24	71	0.6	0.81	-0.004	60	73	180	293
25%	10%	55%	25%	30%	60%	10%	10%	10%

HD50K

CED	BW	WW	YW	SC	Doc	HP	CEM	Milk	CW	Marb	RE	Fat
39	50	11	2	28	25	67	21	23	5	46	29	55

Consigner: Kelley Cattle Company Kent Kelley 417-274-7300
Check out what the 10G female can produce! Double digit calving ease with Top 10% WW, Top 4% YW, and TOP 1% RADG! Note the +31 Milk and TOP 10% CW. Sired by the Iron Horse bull, with 10% \$W, \$B, & \$C. Be sure th check out this solid female on sale day!

35A KELLEY LUCY 11K

Cow DOB: 9/14/22 Tattoo: 11K Reg: 20511717

Basin Payweight 1682
Kelley Payweight 4G
Kelley Lucy 11A
Kelley Ten X 4506
Kelley Lucy 17G
Lucy 9028 of N947-178E

BW	60
ADJ	
WW	
ADJ	
YW	

CED	BW	WW	YW	RADG	SC	HP	CEM	Milk
0	3.6	79	140	0.3	1.51	6.1	3	20
95%	95%	10%	10%	20%	15%	95%	95%	90%
Doc	CW	Marb	RE	Fat	\$M	\$W	\$B	\$C
10	79	0.52	0.55	0.039	34	60	171	256
85%	3%	65%	65%	85%	95%	35%	15%	35%

HD50K

CED	BW	WW	YW	SC	Doc	HP	CEM	Milk	CW	Marb	RE	Fat
80	79	6	5	14	69	93	56	77	2	62	42	81

Consigner: Kelley Cattle Company Kent Kelley 417-274-7300
A really neat pedigree on this female going back two extremely popular & pleasing bulls in the breed, Ten X and Payweight. Note the Top 15% SC on this female. Extremely good carcass and growth genomics on this female. Top 6% WW, Top 5% YW, and TOP 3% CW! Be sure to circle the +171 Top 15% \$B on this female as well!



BIGK/WSC IRON HORSE 025F
SIRE OF LOT 34A



V A R SIGNAL 7244
SERVICE SIRE OF LOT 34 & 35



MILL BAR HICKOK 7242
MATERNAL GRANDSIRE OF LOT 34



A A R TEN X 7008 S A
PATERNAL GRANDSIRE OF LOT 34 & 35



BASIN PAYWEIGHT 1682
PATERNAL GRANDSIRE OF LOT 35A



FALL PAIRS

36 AF MISS UNIQUE EVE 4020

Cow DOB: 12/19/20 Tattoo: 4020 Reg: 20022757

Plattemere Weigh Up K360
Deer Valley Unique 5635
Sitz Henrietta Pride 643T
R/M Ironstone 4047
Jestress Gal 2G35 of GAR
Lay's Jestress Gal 6409

BW	83
ADJ WW	641
ADJ YW	

CED	BW	WW	YW	RADG	SC	HP	CEM	Milk
3	1.8	71	122	0.26	0.27	11.4	7	21
80%	65%	20%	25%	45%	85%	55%	65%	85%
Doc	CW	Marb	RE	Fat	\$M	\$W	\$B	\$C
14	37	0.95	0.82	-0.019	42	59	148	234
70%	75%	25%	15%	95%	40%	40%	60%	

ANGUS GS

CED	BW	WW	YW	SC	Doc	HP	CEM	Milk	CW	Marb	RE	Fat
59	38	38	43	88	71	41	49	83	71	11	29	15

Consigner: Asher Farms Tom Asher 417-257-3220

4020 is every cattleman's dream, extreme depth of body and dimension with flawless skeletal structure. She is Top 20% WW, Top 25% YW, Top 25% Mark, and TOP 15% \$Grid! 4020's Dam is still in production at Asher Farms, Asher is only selling this top producing female because they wanted to bring something really special. This cow has loads of potential to create herd sires or donors, as seen in her amazing Fireball calf! Bred Back to Tehama Patriarch F028 (Reg #18981191) a powerfull bull, with data and phenotype to produce both quality females and in demand, high satisfaction sons. Bred on 12/8/2022 and Ultra Sounded for a Due Date of Sept 13, 2023.



DEER VALLEY UNIQUE 5635
SIRE OF LOT 36

36A AF FIREBALL 2622

Bull DOB: 10/01/22 Tattoo: 2622 Reg: 20562786

G A R Sure Fire 6404
GB Fireball 672
GB Anticipation 432
Deer Valley Unique 5635
AF Miss Unique Eve 4020
Jestress Gal 2G35 of GAR

BW	
ADJ WW	
ADJ YW	

CED	BW	WW	YW	RADG	SC	HP	CEM	Milk
12	-0.2	76	141	0.34	1.17	9.5	11	29
10%	20%	15%	10%	3%	30%	80%	20%	30%
Doc	CW	Marb	RE	Fat	\$M	\$W	\$B	\$C
14	66	1.44	1.24	0.034	41	71	211	315
70%	15%	2%	1%	80%	95%	15%	1%	3%

ANGUS GS

CED	BW	WW	YW	SC	Doc	HP	CEM	Milk	CW	Marb	RE	Fat
2	3	26	14	24	65	61	51	15	29	5	2	56

Consigner: Asher Farms Tom Asher 417-257-3220

Be sure to circle this herd sire prospect! Out of the deep bodied and extremely sound 4020 cow, and sired by one of the hottest bulls in the Angus Breed right now, this Fireball son does it all. A real spread bull with both TOP 10% CED & YW. Feed efficiency with TOP 3% RADG. Good maternal qualities with +11 CEM and +29 Milk. Carries the Targeting the Brand Carcass traits logo, TOP 2% MARB and TOP 1% RE. Excellent on the Angus Indexes, Top 1% for both \$AxH & \$AxJ, TOP 3% +315 \$C and TOP 1% \$B.



GB FIREBALL 672
SIRE OF LOT 36A

All buyers invited to view the sale animals morning of sale day

Join us for donuts & coffee sale day morning

Juniors sign up for \$100 drawing

Ring Side
Phone Bidding Available

Brett Sayre
573-881-1876

Scott Crawford
816-804-1410

Drew Simon
417-838-2521

James Hayes
417-254-1699

37

Cow DOB: 09/09/22 Tattoo: 852E Reg: 20610795

Dameron First Class

GCC Money Earned 852E ET
Duff W 373 Dixie Erica 8137

Pleasant Valley Insight 1504

Sinning's Queen Lass E94

Sinning's Queen Lass B75

BW	76
ADJ WW	
ADJ YW	

CED	BW	WW	YW	RADG	SC	HP	CEM	Milk
I*4 70%	I*2.2 75%	I*62 45%	I*100 65%	I*0.21 85%	I*0.64 65%	I*16.6 5%	I*8 55%	I*24 65%
Doc	CW	Marb	RE	Fat	\$M	\$W	\$B	\$C
I*9 85%	I*33 85%	I*0.32 85%	I*0.66 50%	I*0.009 25%	\$3 25%	\$9 40%	\$17 80%	\$25 70%

[illegible]

Consigner: Sinning Cattle Company Chris Sinning 417-849-6417
We dug deep into our fall calves for a great show heifer for a junior. This heifer is sired by GCC Money Earned and out of our Queen Lass line. JUNIORS, DON'T MISS THIS HEIFER!! You will not be disappointed in this fancy heifer.



**SINNING'S QUEEN LASS K2
LOT 37**

38

Cow DOB: 09/01/22 Tattoo: 4682 Reg: 20545794

EXAR Blue Chip 1877B

5T Power Chip 4790
5T Miss Wix 8002

PVF Insight 0129

JL Blackcap2486

JL Blackcap 8246

BW	68
ADJ WW	
ADJ YW	

CED	BW	WW	YW	RADG	SC	HP	CEM	Milk
5 60%	0.2 30%	50 80%	89 85%	0.22 75%	-0.03 95%	12.5 40%	10 30%	21 85%
Doc	CW	Marb	RE	Fat	\$M	\$W	\$B	\$C
10 85%	27 95%	0.08 95%	0.74 35%	-0.008 25%	41 95%	44 85%	93 95%	162 95%

HD50K

CED	BW	WW	YW	SC	Doc	HP	CEM	Milk	CW	Marb	RE	Fat
50	17	81	79	94	77	37	22	66	85	90	17	21

Consigner:JL Cattle Company Shanon Jenkins 417-718-8062

JL Blackcap 4682 is one of the coolest animals ever born on our farm, and we are excited to pair her with a junior for spring jackpots and summer shows. Deep-sided, thick-topped, and so correct in her structure, 4682 has the flash to be competitive at any level. Her pedigree is stacked on both sides, going back to Dameron First Class on the top, and Insight and Mytty In Focus on the bottom. After her show career, 4682 will work in the pasture. Our line of Blackcap cows is consistent and reliable in their fertility, raising a good calf every year. Make sure to take a look at JL Blackcap 4682 on sale day!



JL BLACKCAP 4682
LOT 38

HALTER BROKE
SHOW HEIFERS
READY TO GO
TO WORK!

**S
B
W
E
F
I
O
H
S
Z
W
D**

OPEN SHOW HEIFERS

39 JL BLACKCAP 2462

Cow DOB: 09/06/22 Tattoo: 2462 Reg: 20545795

Musgrave Big Sky
Musgrave Sky High 1535
Flag Queen W 00649

JL Prime Country 2484
JL Blackcap 8246
MOSB Blackcap U824

BW	82
ADJ	
WW	
ADJ	
YW	

CED	BW	WW	YW	RADG	SC	HP	CEM	Milk
2	2.7	56	95	0.2	1.01	4.4	5	30
85%	85%	65%	75%	90%	40%	95%	80%	25%
Doc	CW	Marb	RE	Fat	\$M	\$W	\$B	\$C
15	25	0.32	0.59	0.034	41	56	94	163
65%	95%	85%	60%	80%	95%	50%	95%	95%

HD50K

CED	BW	WW	YW	SC	Doc	HP	CEM	Milk	CW	Marb	RE	Fat
73	83	63	75	36	58	99	57	23	89	71	62	93

Consigner: JL Cattle Company Shanon Jenkins 417-718-8062

The longer you look at this heifer, the better she gets. JL Blackcap 2462 is long-spined, extended in her front, and carries muscle from front to back. She's flexible off both ends, and holds her head high while doing so. As a breeding piece, 2462 has the potential to add massive length and power to her progeny. Her half-sib is the dam of JL Blackcap 4682, so fertility will again be reliable. 2462 also goes back to Mytty In Focus on the bottom, but adds the performance of Musgrave Angus genetics with Sky High as her sire. This heifer can go many different directions as far as showing and breeding, so make sure to come and see the possibility of what she can do for your program.



**JL BLACK CAP 2462
LOT 39**

40 SINNING'S HEATHERBLOOM K1

Cow DOB: 01/02/22 Tattoo: H87 Reg: 20610796

Stevenson Turning Point
Sinning's Turn It Up H87
Sinning's Gammer E87

PVF Insight 0129
Sinning's Heatherbloom G43
Sinning's Heatherbloom Y55

BW	67
ADJ	
WW	
ADJ	
YW	

CED	BW	WW	YW	RADG	SC	HP	CEM	Milk
I*11	I*0.2	I*67	I*112	I*0.25	I*0.75	I*11	I*11	I*25
15%	30%	30%	45%	40%	55%	55%	20%	60%
Doc	CW	Marb	RE	Fat	\$M	\$W	\$B	\$C
I*13	I*42	I*0.30	I*0.84	I*0.015	I*58	I*63	I*133	I*230
65%	50%	72%	21%	55%	55%	30%	47%	52%

CED	BW	WW	YW	SC	Doc	HP	CEM	Milk	CW	Marb	RE	Fat

Consigner: Sinning Cattle Company Chris Sinning 417-849-6417
Here is a very nice open heifer that we are offering for sale, that will make anyone a great cow. The Heatherbloom line of cows are very prolific. The girls have had a Heatherbloom heifer in the show string ever since they started showing.



**PVF INSIGHT 0129
MATERNAL GRANDSIRE OF LOT 40**

OPEN PERFORMANCE HEIFERS

41 BMA RITA 207

Cow DOB: 1/7/22 Tattoo: 207 Reg: 20434029

E W A Peyton 642
DE-SU Volunteer B122
E W A 3128 of 9067 Weigh Up

SydGen Blacksmith 4010
BMA Rita 966
BMA Rita 731

BW	65
ADJ	
WW	500
ADJ	
YW	876

CED	BW	WW	YW	RADG	SC	HP	CEM	Milk
12	0.2	70	128	0.26	0.96	17	5	37
10%	30%	25%	20%	45%	45%	4%	80%	3%
Doc	CW	Marb	RE	Fat	\$M	\$W	\$B	\$C
19	68	1.67	1.05	0	73	75	218	356
45%	15%	1%	10%	35%	25%	10%	1%	1%

ANGUS GS

CED	BW	WW	YW	SC	Doc	HP	CEM	Milk	CW	Marb	RE	Fat
17	21	54	17	44	39	2	98	3	14	1	5	27

Consigner: Blue Mound Angus Fred Swartzentruber 417-327-3752
Sired by DeSu Volunteer B122 TOP 1% for \$B, TOP 1% for \$C, TOP 1% for Marbling. SydGen sold a Volunteer heifer out of a Blacksmith Dam in their Production Sale 11-19-22 for \$60,000. This female is the Number 8 on Volunteer daughters in the Breed for \$C, and the NUMBER 1 \$C ANIMAL IN THE ENTIRE BLUE MOUND PROGRAM!



**DE-SU VOLUNTEER B122
SIRE OF LOT 41**



**BMA RITA 207
LOT 41**



**PATERNAL SISTER TO
BMA RUBY ROSE 158**

OPEN PERFORMANCE HEIFERS

OPEN PERFORMANCE HEIFERS

42 WRR LASSIE W 201

Cow DOB: 02/22/22 Tattoo: 201 Reg: 20371047

WAR Cavalry B063 Z044
Wilks Regiment 9035
Vintage Chloe 6137

WRR Brutus 262
WRR Lassie W 7107
WRR Lady Traveler 818

BW	61
ADJ	687
WW	
ADJ	
YW	

CED	BW	WW	YW	RADG	SC	HP	CEM	Milk
12	-0.1	80	154	0.35	1.46	11.6	13	38
10%	20%	10%	3%	2%	15%	50%	10%	2%
Doc	CW	Marb	RE	Fat	\$M	\$W	\$B	\$C
16	72	0.5	1	-0.033	38	77	171	260
60%	10%	70%	10%	10%	95%	10%	15%	35%

HD50K

CED	BW	WW	YW	SC	Doc	HP	CEM	Milk	CW	Marb	RE	Fat
61	78	1	1	6	66	50	18	2	1	52	3	21

Consigner: Wiles Ridge Ranch Truman Wiles 417-252-0726

Big growthy heifer out of the Select Sires Sire Wilks Regiment. This heifer embodies the Curve bender terminology with a great combination of calving ease and growth. She has an excellent set of EPDS. 12 CED TOP 10%, -1 BW TOP 20%, 80 WW TOP 10%, and a 154 YW TOP 3%. It doesn't stop there .35 RADG TOP 2%, 1.46 SC TOP 15%, 13 CEM TOP 10%, and a 38 MILK TOP 2%. IF YOU ARE LOOKING FOR A FEMALE TO ADD SOME SIZE TO YOUR HERD SHE IS THE NUMBER 16 NON-PARENT FEMALE YH HEIFER IN THE BREED.



WRR LASSIE W 201
LOT 42



WILKS REGIMENT 9035
SIRE OF LOT 42

43 RAF LADY ERICA 782

Cow DOB: 03/22/22 Tattoo: 782 Reg: 20551093

KB-Full Measure C40
WRR Real Time
WRR Forever Lassie 579
WRR Destination 178
WRR Lady Erica 550
WRR Lady Erica 325

BW	61
ADJ	704
WW	
ADJ	
YW	870

CED	BW	WW	YW	RADG	SC	HP	CEM	Milk
7	0.4	81	141	0.29	-0.13	16.7	8	18
45%	30%	10%	10%	25%	95%	4%	55%	95%
Doc	CW	Marb	RE	Fat	\$M	\$W	\$B	\$C
22	55	0.5	0.85	-0.033	71	69	150	266
35%	35%	70%	25%	10%	25%	20%	35%	30%

HD50K

CED	BW	WW	YW	SC	Doc	HP	CEM	Milk	CW	Marb	RE	Fat
69	53	12	12	97	34	8	64	95	30	70	14	5

Consigner: Redwine Angus Farm Jake Redwine 870-810-3901

A uniform pair of heifers of heifers with 782 & 792. 792 is Show-Me-Select qualified with TOP 10% WW and YW. Another feed efficient female from Redwine Angus Farms with Top 25% RADG. Note the TOP 4% Heifer pregnancy on this female. Every \$Value above Top 35% with a \$W of Top 20%. Excellent depth, frame, and size to both of the 792 & 782 heifers.



WRR FOREVER LASSIE 579
PATERNAL SISTER TO LOT 43 DAM

44 RAF LADY ERICA 792

Cow DOB: 03/22/22 Tattoo: 792 Reg: 20551092

KB-Full Measure C40
WRR Real Time
WRR Forever Lassie 579
WRR Destination 178
WRR Lady Erica 550
WRR Lady Erica 325

BW	55
ADJ	709
WW	
ADJ	
YW	820

CED	BW	WW	YW	RADG	SC	HP	CEM	Milk
9	0.3	80	136	0.29	-0.21	10.9	10	24
30%	30%	10%	15%	25%	95%	60%	30%	65%
Doc	CW	Marb	RE	Fat	\$M	\$W	\$B	\$C
29	68	0.58	0.52	-0.016	44	71	165	258
10%	15%	60%	70%	20%	95%	15%	20%	35%

HD50K

CED	BW	WW	YW	SC	Doc	HP	CEM	Milk	CW	Marb	RE	Fat
58	57	1	10	95	10	54	57	77	2	61	40	15

Consigner: Redwine Angus Farm Jake Redwine 870-810-3901

A really complete female, note her +9 Show-Me-Select Calving ease, Top 10% WW and Top 15% YW. Really good docility and carcass weight EPD's on this female as well. She genotyped extremely well, TOP 1% WW, Top 10% YW, Top 10% Docility and TOP 2% CW. Top 25% RADG, for feed efficiency. Be sure to highlight her \$Values as well Top 15% \$W. Excellent depth, frame, and size to both of the 792 & 782 heifers.



WRR NEXT GEN 130
MATERNAL BROTHER TO LOTS 43 & 44

OPEN PERFORMANCE HEIFERS

45 SMITH VALLEY ERICA 2816

Cow DOB: 9/15/22 Tattoo: 2816 Reg: 20514942

GAR Ashland
GAR Home Town
Chair Rock Sure Fire 6095

MGR Treasure
Powell Erica 8030
Williams Prop Erica 255 110

BW	72
ADJ	
WW	
ADJ	
YW	

CED	BW	WW	YW	RADG	SC	HP	CEM	Milk
8	2	86	153	0.33	1.1	10.8	16	30
35%	70%	3%	3%	5%	35%	60%	1%	25%
Doc	CW	Marb	RE	Fat	\$M	\$W	\$B	\$C
24	70	1.7	0.82	-0.008	71	81	219	355
25%	10%	1%	25%	25%	25%	3%	1%	1%

HD50K

CED	BW	WW	YW	SC	Doc	HP	CEM	Milk	CW	Marb	RE	Fat
69	82	6	6	24	30	62	4	34	9	1	35	21

Consigner: Smith Valley Angus Kim & Brian Smith 573-729-2910
Her donor dam is a power house from the Powell program, Powell Erica 8030 was the top selling Bred Cow in the Smith Valley Angus 2020 Production sale selling 1/2 interest to Zybach Angus, TX. Smith Valley Erica 2816 did outstanding on her genomics, sending 10 EPD's into the single digits!!! With her pedigree, EPD profile, and look combination puts her in an elite category. **DONOR ALERT!!**



WILLIAMS PROP ERICA 255 110
MATERNAL GRANDAM OF LOT 45



GAR HOME TOWN
SIRE OF LOT 45



POWELL ERICA 8030
DAM OF LOT 45

Powell Erica 8030 comes from one of the most prolific bands of sisters in recent Angus history. The Powell program in Limestone, TN purchased four daughters of Prophet by Williams Erica 812 from Williams Angus in Eastern TN. They went on in short time to produce performance and carcass value for premier Angus herds across the country. In the 2017 Powell Farms sale full sisters-in-blood to the maternal grandam of Lot 45 brought \$20,000, \$40,000, and \$50,000 to set the stage for a Williams Prop Erica movement. In 2018 four more sisters to the Williams Prop Erica 255 110 averaged \$14,000. 8030's pedigree is so well documented with Treasure, arguably being the best breeding grandson of Ten X in the breed for phenotype time and time again. Williams Prop Erica 255 110 is a documented value generator and performance provoker.

3 Ways to Bid

#1
Join Us
April 15, 2023
in person
at Wright County
Livestock
in
Mountain Grove, MO

#2
Ring Side
Phone Bidding
Brett Sayre
573-881-1876
Scott Crawford
816-804-1410

Drew Simon
417-838-2521

James Hayes
417-254-1699

#3
Bid Online
at

www.LiveWireAuction.com

Trucking arrangements available

SPRING PAIRS

46

WRR FOREVER LASSIE 793

Cow DOB: 11/11/17 Tattoo: 793 Reg: 19139742

AAR Ten X 7008 SA

EXAR Stud 4658B

BoBo Rita 1559

Quaker Hill Rampage 0A36

WRR Forever Lassie 546

WRR Forever Lassie 173

BW	45
ADJ WW	642
ADJ YW	800

CED	BW	WW	YW	RADG	SC	HP	CEM	Milk
13	-0.7	71	123	0.28	1.04	17.7	18	11
4%	15%	15%	15%	15%	30%	2%	1%	95%
Doc	CW	Marb	RE	Fat	\$M	\$W	\$B	\$C
1	48	0.83	0.67	0.019	63	55	164	276
95%	25%	20%	25%	65%	40%	45%	10%	10%

ANGUS GS

CED	BW	WW	YW	SC	Doc	HP	CEM	Milk	CW	Marb	RE	Fat
9	13	61	52	37	94	12	1	99	65	34	54	53

Consigner: Wiles Ridge Ranch Truman Wiles 417-252-0726

Really feminine growthy EXAR Stud daughter. She has an excellent set of EPDS. 13 CED TOP 4%, -7 BW TOP 15%, 71 WW TOP 15%, and a 123 YW TOP 15%. She has a \$BEEF value of 164 TOP 10%. She has a \$C value of 276 TOP 10%. She has an average birth weight of 62 lbs. on 4 calves. We are retaining a Reliant daughter. She is selling with a bull calf born 3/06/23 sired by ST Genetics sire K C F Bennett Exponential Reg# 19507801. Birth weight 64 lbs.



WRR FOREVER LASSIE 546
DAM OF LOT 46



EXAR STUD 4658B
SIRE OF LOT 46



K C F BENNETT EXPONENTIAL
SIRE OF LOT 46 CALF

Pictures &
Videos Online

47

AF FOREVERLADY MONUMENTAL420

Cow DOB: 02/07/20 Tattoo: 420 Reg: 19815048

3F Epic 4631

EXAR Monumental 6056B

FWY 7008 of C085 4029

Connealy Black Granite

CMF 22X Forever Lady 262C

C M F 33U Forever Lady 22X

BW	74
ADJ WW	781
ADJ YW	

CED	BW	WW	YW	RADG	SC	HP	CEM	Milk
9	0.8	66	111	0.22	1.13	9	12	25
25%	40%	20%	30%	60%	25%	85%	15%	60%
Doc	CW	Marb	RE	Fat	\$M	\$W	\$B	\$C
13	44	0.86	1.04	-0.017	57	66	153	255
65%	35%	15%	3%	15%	60%	15%	20%	20%

HD50K

CED	BW	WW	YW	SC	Doc	HP	CEM	Milk	CW	Marb	RE	Fat
35	43	54	74	31	82	88	28	65	73	34	5	11

Consigner: Asher Farms Tom Asher 417-257-3220

A really nice cow with a stacked pedigree! Sired by the 2017 Top Selling bull from Express Monumental, and stemming back to Black Granite, Ten X, and a Forever Lady! Top 25% CED, 20% WW, 30% YW! Be sure to look at the carcass traits on this female, carrying the targeting the brand logo she is Top 15% Marb and TOP 3% RE. She sells with a 2/23/22 Bull calf (BW 79 lbs) out of Sitz Stellar 726D (Reg # 18397542) a super thick topped and deep sided bull who had a 905 lb weaning weight. This pair is great on paper and even better in person be sure to check them out sale day!



EXAR MONUMENTAL 6056B
SIRE OF LOT 47



SITZ STELLAR 726D
SIRE OF LOT 47 CALF



48 SEAGRAVES RUBY 2061

Cow DOB: 2/12/21 Tattoo: 2061 Reg: 20023313

G A R Sure Fire 6404
GB Fireball 672
GB Anticipation 432
44 Arsenal 4W07
44 Ruby 8140
44 Ruby 5414

BW	66
ADJ	572
WW	
ADJ	809
YW	

CED	BW	WW	YW	RADG	SC	HP	CEM	Milk
12	-0.7	74	141	0.38	0.09	9.4	11	21
10%	15%	15%	10%	1%	90%	80%	20%	85%
Doc	CW	Marb	RE	Fat	\$M	\$W	\$B	\$C
21	65	1.35	1.31	0.004	36	60	220	321
40%	15%	4%	1%	40%	95%	35%	1%	3%

ANGUS GS

CED	BW	WW	YW	SC	Doc	HP	CEM	Milk	CW	Marb	RE	Fat
3	2	68	20	89	47	62	78	73	49	12	3	16

Consigner: Seagraves Angus Kevin Devore 618-339-0665

A really neat opportunity to get a bred Fireball Daughter. Fireball is one of the hottest bulls in the breed right now, marking his cattle with excellent carcass traits. Check out the first 5 EPDs on this heifer! double digit calving ease with monster growth, and TOP 1% feed efficiency. Note her 15% CW, TOP 4% MARB, and TOP 1% CW. She is a direct daughter of the 44 Ruby 8140, who goes back to great 44 Ruby 5414. Ruby 5415 is an elite donor at 44 Farms and sired by the multi-trait leader in the 44 Farms herd sire roster, Arsenal 4W07 and the power sire, Beast Mode B074. Sells with a 3/3/23 Bull Calf actual birth weight 66 pounds by Virginia Tech Statesmen (Reg #20085208) with EPDs CED +8, YW +167, Milk +28, \$B +208, \$C 354. This pair has donor and new herd sire written all over them!



SEAGRAVES RUBY 2061
LOT 48



44 RUBY 8140
DAM OF LOT 48



VIRGINIA TECH STATESMAN
SIRE FOR LOT 48 BULL CALF

49 SEAGRAVES RUBY 2104

Cow DOB: 3/20/21 Tattoo: 2104 Reg: 20162217

SydGen Enhance
Seagraves Enhance 7618
44 Rita 1533
V A R Discovery 2240
Seagraves Ruby 5216
JDD Ruby of Seagraves 4914

BW	72
ADJ	531
WW	
ADJ	721
YW	

CED	BW	WW	YW	RADG	SC	HP	CEM	Milk
9	0.2	70	142	0.32	1.00	15.8	8	43
30%	30%	25%	10%	10%	40%	10%	55%	1%
Doc	CW	Marb	RE	Fat	\$M	\$W	\$B	\$C
24	71	1.15	0.85	0.018	85	80	195	338
25%	10%	10%	25%	65%	4%	4%	4%	2%

ANGUS GS

CED	BW	WW	YW	SC	Doc	HP	CEM	Milk	CW	Marb	RE	Fat
35	34	44	3	48	19	11	70	4	13	6	15	54

Consigner: Seagraves Angus Kevin Devore 618-339-0665

A very feminine enhance daughter, with a clean front and excellent depth and spring of rib. Check out the stacked set of numbers, on this phenotypical female! +9 CED with +70 WW and TOP 10% YW and RADG. You will be very pleased in retaining females from this female, with TOP 10% Heifer pregnancy and TOP 1% Milk. High-lite her carcass data as she is TOP 10% CW and MARB. A real stunning set of \$Values as every value is TOP 4% or better with +338 TOP 2% \$C. She is Bred to K C F Bennett Rock G723 (Reg #19749028) the Seagraves' selection from the Knoll Crest Farm with CED +14, WW +92, YW +151, HP +16.5, \$W +86. This should be an excellent mating as this calf could potentially have CED +12, YW +147, HP +16.2, \$W +83! This could be your next herd sire or donor female!



SEAGRAVES RUBY 2104
LOT 49



SYDGEN KCF GAVEL 8361
MATERNAL BROTHER
TO K C F BENNETT ROCK G723

SEAGRAVES

50 *BMA ERICA 054*

SydGen FATE 2800
SydGen Faith 6023
 SydGen Eulima 0490
 SydGen Exceed 3223
BMA Erica 645
 BMA Erica 435

BW	69
ADJ WW	587
ADJ YW	856

CED	BW	WW	YW	RADG	SC	HP	CEM	Milk
5 60%	2.5 80%	69 25%	135 15%	0.36 1%	2.07 3%	13 35%	8 55%	30 25%
Doc	CW	Marb	RE	Fat	\$M	\$W	\$B	\$C
14 70%	80 3%	1.06 15%	1.28 1%	-0.058 1%	49 85%	59 40%	228 11%	345 1%

ANGUS GS

CED	BW	WW	YW	SC	Doc	HP	CEM	Milk	CW	Marb	RE	Fat
90	95	25	3	1	44	24	62	29	2	12	1	1

Consigner: Blue Mound Angus Fred Swartzentruber 417-327-3752
Sired by SydGen Faith out of an Exceed Daughter. TOP 1% RE, TOP 1% for \$B and TOP 1% for \$C. **Out of Blue Mound's "Keeper Pen."** Born 12-11-22 to DeSu Volunteer B122. At the 2023 Spring Brinkley Angus Ranch Sale DeSu Volunteer Bulls averaged \$11,629. De-Su Volunteer is recently deceased and now there is very limited semen on Volunteer. Blue Mound Angus has used 100% A.I. Sires & No Clean-Up bulls for the last 18 plus years. 3/22/23 vet ultrasounded confirmed safe in calf, vet confirmed **HEIFER PREGNANCY!**



BMA RUBY ROSE 928
BMA RUBY ROSE 158

BMA Erica 645 is a paternal sister to the great BMA Ruby Rose 928, whose produced the De-Su Volunteer daughter BMA Ruby Rose 158. The Top Selling Pair for \$25,000 at the Spring 22 Power Sale.



BMA ERICA 054
LOT 50



**DE-SU VOLUNTEER B122
SERVICE SIRE OF LOT 50**

51 **DHT REVELATION MAGIC 476 A59**

Quaker Hill Rampage 0A36
V A R Revelation 6299
 Sandpoint Blackbird 8809
 Byergo Black Magic 3348
DHT Magic Granite200 Sis 47
 DHT Blk Granite 785 Gin 20

BW	82
ADJ WW	668
ADJ YW	805

CED	BW	WW	YW	RADG	SC	HP	CEM	Milk
4	5.6	101	169	0.34	2.04	14.8	10	30
70%	95%	1%	1%	3%	3%	15%	30%	25%
Doc	CW	Marb	RE	Fat	\$M	\$W	\$B	\$C
25	75	0.96	1.13	-0.034	68	80	192	317
20%	5%	25%	3%	10%	35%	4%	5%	4%

ANGUS GS

CED	BW	WW	YW	SC	Doc	HP	CEM	Milk	CW	Marb	RE	Fat
95	100	1	6	4	5	34	52	33	13	18	10	10

Consigner: DHT Angus Cecil Huff 417-250-1300

Is true top female. With top 1% weaning and Yearling at 101 WW and 169 YW. 12 EPD's in top 5%. She is a +.96 on Marb and +1.13 RE. Be sure to circle her excellent \$B and \$C numbers both Top 4%. 5 of 6 \$Values in top 10% or higher. This is front pasture female with loads of potential! Seed stock qualified. Bred to Fireball 672 to calf 9/27/2023. FIREBALL continues to exceed all expectations for both performance and phenotypic quality and is the industry's first and only high accuracy sire to exceed the +400 \$Combination barrier



V A R REVELATION 6299
SIRE OF LOT 51



GB FIREBALL 672
SERVICE SIRE OF LOT 51
& SIRE OF LOT 48

*Additional Pictures
&
Videos Online*

BRED HEIFERS

BRED HEIFERS

53 HAF RITA 2128

Cow DOB: 10/16/21 Tattoo: 2128 Reg: 20277621

E W A Peyton 642

HAF Peyton 1911

HAF Pridemere 1308

K BAR Express 9126

HAF Rita 1819

Bridges Prophet 5115

BW	60
ADJ	
WW	
ADJ	
YW	

CED	BW	WW	YW	RADG	SC	HP	CEM	Milk
10	1	83	144	0.27	0.66	9.4	13	29
20%	45%	5%	10%	40%	65%	80%	10%	30%
Doc	CW	Marb	RE	Fat	\$M	\$W	\$B	\$C
19	63	0.78	0.69	-0.014	71	82	154	271
45%	20%	40%	45%	20%	25%	3%	30%	25%

HD50K

CED	BW	WW	YW	SC	Doc	HP	CEM	Milk	CW	Marb	RE	Fat
19	31	8	15	56	25	53	19	33	8	38	30	13

Consigner: Hudson Angus Farm Roland Hudson 573-338-2040

Calving ease female with growth, milk and balanced carcass. Female comes from the "Keep Pen." Note her double digit calving ease and explosive growth TOP 5% +83 WW! This female's EPD's and physical structure allow the breeder to use the bull of their choice, to take the offspring in many different directions. Sire is being used by Larrick Farms in their retail beef business. AI Bred to LAR Man in Black (19955191) 12/28/22 and confirmed vet pregnant on 2/11/23.



**HAF RITA 2128
LOT 53**



**LAR MAN IN BLACK
SERVICE SIRE LOT 53**

Bid Online



LIVE WIRE AUCTION

WWW.LIVEWIREAUCTION.COM

BRED HEIFERS

54

WRR LADY PRINCESS 1109

Cow DOB: 12/24/21 Tattoo: 1109 Reg: 20371110

Basin Payweight 1682
Deer Valley Growth Fund
Deer Valley Rita 36113

V A R Upfront 0392
WRR Lady Princess 610
WRR Lady Princess 202

BW	65
ADJ WW	695
ADJ YW	962

CED	BW	WW	YW	RADG	SC	HP	CEM	Milk
5	1.9	93	166	0.35	1.06	8.3	9	33
60%	65%	1%	1%	2%	40%	90%	40%	10%
Doc	CW	Marb	RE	Fat	\$M	\$W	\$B	\$C
32	87	0.7	0.68	0.017	64	89	187	307
3%	1%	45%	45%	60%	45%	1%	10%	10%

HD50K

CED	BW	WW	YW	SC	Doc	HP	CEM	Milk	CW	Marb	RE	Fat
79	87	2	2	28	1	84	15	22	1	32	51	62

Consigner: Wiles Ridge Ranch Truman Wiles 417-252-0726

A powerful balanced 307 \$C Growth Fund daughter. She is the ONLY Growth Fund daughter in the breed with her combination of WW, YW, RADG, DOC, MILK, and \$C. Her maternal sister sold for \$5,100 at the 2019 Missouri Angus Futurity. She was bred 3/9/23 to EAR Prime Time 0002 (Reg # 19733707) CED +11, YW +135, RADG +0.33, HP +18.6, MARB +2.47, \$B 267, \$C 412 the number 1 \$C bull in the breed.



WRR LADY PRINCESS 1109
LOT 54



WRR LADY PRINCESS 810
MATERNAL SISTER TO LOT 54



EAR PRIME TIME 0002
SERVICE SIRE FOR LOT 54

BRED COWS

55

K1712 MATTALIN-SOUTHSIDE

Cow DOB: 11/29/17 Tattoo: K712 Reg: 19030545

Nichols Extra K205
K C F Bennett Southside
K C F Miss 208 S11

PA Safeguard 021
TEKO K1409 Mattalin
TEKO K1106 Erica -K808/Day

BW	72
ADJ WW	615
ADJ YW	766

CED	BW	WW	YW	RADG	SC	HP	CEM	Milk
-4	5	68	128	0.25	2.01	19.3	4	38
95%	95%	20%	10%	30%	2%	1%	85%	2%
Doc	CW	Marb	RE	Fat	\$M	\$W	\$B	\$C
19	67	1	0.6	-0.032	66	60	180	299
35%	4%	10%	35%	5%	30%	30%	3%	3%

HD50K

CED	BW	WW	YW	SC	Doc	HP	CEM	Milk	CW	Marb	RE	Fat
96	99	10	7	2	44	3	59	2	2	22	26	4

Consigner: TeKo Farm Ted Koontz 417-839-3960

A great five year old who has done a great job in our herd. Complete ABS genetic pedigree sired by KCF Bennett Southside. Great EPDs including Carcass and \$Values. Calving interval 396 on three pregnancies. Dam of heifer twin Lot 37 in Power Performance Sale last April that went to Running S Ranch Licking MO. We are retaining her other 2021 twin heifer K2109 and her 2022 heifer K2205 in our herd to continue her lineage. Pasture exposed to 6/19/22 - 12/31/22 to TeKo K2105 Ascension (Reg # 19967150).



K1712 MATTALIN-SOUTHSIDE
LOT 55

SEE THE BRED COWS

60

HR EVERGREEN 9169 X POSS DEADWOOD

4 Embryos

Poss Maverick

Poss Deadwood (Reg # 19597261)

Poss Ellunamere 399

SydGen Enhance

HR Evergreen 9169 (Reg # 19554219)

HR Evergreen 7655

	CED	BW	WW	YW	RADG	SC	HP	CEM	Milk
Sire	12 15%	-0.2 20%	82 10%	147 10%	0.35 2%	1.08 35%	12 45%	9 45%	28 35%
Dam	13 4%	-1.8 4%	72 10%	139 4%	0.32 3%	1.81 3%	11.7 45%	12 15%	33 15%
	Doc	CW	Marb	RE	Fat	\$M	\$W	\$B	\$C
Sire	24 20%	86 1%	2.04 1%	0.92 10%	0.027 70%	66 35%	77 10%	269 1%	415 1%
Dam	30 3%	67 4%	1.17 4%	0.88 10%	-0.007 25%	84 3%	77 3%	199 1%	342 1%

Consigner: 3/O Cattle Company Wes Ogle 417-448-4126

Selling 5 IVF Embryos and Guaranteeing 2 Pregnancies

HR Evergreen 9169 is making her mark on the breed as an elite donor. A stacked pedigree with the proven SydGen Enhance Sire and Maternal Grand dam the great 1010 donor from Crazy K and High Roller. This female offers top EPDs, double digit calving ease with monster growth and phenomenal carcass traits. Every \$Value in the TOP 3% or better! She is the dam of the \$300,000 dollar valuation bull 3/O Mahomes (Reg # 20440590) a full brother to these embryos. Poss Deadwood is currently one of the hottest bulls, and stamps a breed changing set of number on his calves.

Selling 5 IVF Embryos and Guaranteeing 2 Pregnancies if transferred by an AETA certified embryologist or Whitaker Embryo services. Embryos stored in Repologix of Fort Scott Kansas, buyer will be furnished with certificate of embryo transfer.



**POSS DEADWOOD
LOT 60 SIRE**



3/O MAHOMES

Bull DOB: 9/4/22 Tattoo: Reg: 20440590

HR Evergreen 9169 X Poss Deadwood

CED	BW	WW	YW	RADG	SC	HP	CEM	Milk
12 10%	0.2 30%	86 3%	160 2%	0.38 1%	2.24 1%	13.1 35%	15 2%	34 10%
Doc	CW	Marb	RE	Fat	\$M	\$W	\$B	\$C
24 25%	92 1%	1.77 1%	0.7 40%	0.029 75%	96 1%	89 1%	259 1%	432 1%

Full Sib to Lot 60 Embryos



3/O MAHOMES



**HR EVERGREEN 9169
DAM OF LOTS 60 & 61**

The dam of Evergreen 9169 is a daughter of the now-deceased \$280,000 valued Crazy K Ranch and High Roller Angus donor, 1010 sired by the foundation female sire, Payweight 1682. Maternal siblings to the dam of Lot 5 include: the \$65,000 top-selling heifer pregnancy of the first High Roller sale selling to Venado Creek Angus; Evergreen 5036, the \$60,000 top selling open heifer of the 2016 Springfield Angus Sale; a \$45,000 heifer pregnancy selected by Vista Farms as the second high-selling pregnancy of the first High Roller Sale; Evergreen 5020, the \$33,000 second high-selling open heifer of the 2016 Springfield Sale selling to Four Sons Farm; Evergreen 7246 in the Blue Lake Cattle program; Rita 5V51 in the Baylee View Angus herd; Rita 4D15 in the Friendship Farms program; Evergreen 7264, the \$14,000 selection of Spruce Mountain Ranch in the 2019 Crazy K Sale; and the \$11,000 Wackler Farms selection in the 2018 Crazy K Sale, Evergreen 7166.

SE
LO
RY
O
B
R
E
M
B
R
Y
O
S

EMBRYOS

61

HR EVERGREEN 9169 X EAR PRIME TIME 0002

5 IVF Embryos

GB Fireball 672

EAR Prime Time 002 (Reg # 19733707)

ACC Barbara 8038

SydGen Enhance

HR Evergreen 9169 (Reg # 19554219)

HR Evergreen 7655

	CED	BW	WW	YW	RADG	SC	HP	CEM	Milk
Sire	11 15%	2.0 70%	68 30%	135 15%	0.33 4%	0.74 60%	18 2%	10 35%	31 20%
Dam	13 4%	-1.8 4%	72 10%	139 4%	0.32 3%	1.81 3%	11.7 45%	12 15%	33 15%
	Doc	CW	Marb	RE	Fat	\$M	\$W	\$B	\$C
Sire	17 55%	69 10%	2.48 1%	1.00 10%	-0.003 30%	65 35%	62 40%	270 1%	415 1%
Dam	30 3%	67 4%	1.17 4%	0.88 10%	-0.007 25%	84 3%	77 3%	199 1%	342 1%

Consigner: 3/0 Cattle Company Wes Ogle 417-448-4126

Selling 5 Embryos Guaranteeing 2 Pregnancies

The notable donor HR Evergreen 9169 has the great reputation and versatility to flush to an array of bulls. Her TOP EPDs matched with Prime Time could easily create the next highest \$C animal in your herd! Check out the +432 \$C on her Mahomes calf. EAR Prime Time 0002 is one of the hot and upcoming sires in the Breed! With limit semen available and garnishing prices of \$575 at auction, these embryos are limited and rare, and sure to add alot of \$Value to your herd!

Selling IVF Embryos Guaranteeing 2 pregnancies if transfered by an AETA certified embryologist or Whitaker Embryo services. Embryos stored in Repologix of Fort Scott Kansas, buyer will be furnished with certificate of embryo transfer.



**EAR PRIME TIME 0002
LOT 61 SIRE**

9169 is a proven donor with superior heredity, she has the ability to stamp an excellent set of numbers on a calf with a wide variety of bulls. She consistently produces offspring that push the \$400 \$C barrier; Ultra Provider heifer with a \$C 397, Hometown Bull with a \$C 401, Paragon Bull calf with a \$C 409.



**HR EVERGREEN 9169
DAM OF LOTS 60 & 61**

63

E-LEE GROWTH FUND LUCY 2022 X GB FIREBALL 672

2 IVF Reverse Sort Female Embryos

GB sure Fire 6404

GB Fireball 672 (Reg # 18690054)

GB Anticipation 432

Deer Valley Growth Fund

E-LEE Growth Fund Lucy 2022 (Reg # 20355563)

DCF Lucy 3661

	CED	BW	WW	YW	RADG	SC	HP	CEM	Milk
Sire	16 2%	-0.2 20%	66 35%	128 25%	0.34 2%	1.43 15%	9.9 70%	15 3%	23 70%
Dam	10 20%	2.8 85%	90 2%	162 1%	0.32 10%	1.34 20%	15.1 15%	13 10%	31 20%
	Doc	CW	Marb	RE	Fat	\$M	\$W	\$B	\$C
Sire	19 45%	71 5%	2.29 1%	1.25 1%	0.031 75%	58 55%	57 50%	266 1%	403 1%
Dam	20 40%	92 1%	0.66 50%	0.92 15%	0.029 75%	82 10%	83 2%	198 3%	339 1%

Consigner: E-Lee Angus Don Ely 417-830-7530

Selling 2 IVF Reverse Sort Female Embryos Guaranteeing 1 Pregnancy

GB Fireball 672 is a hot mating sire, and for good reason--with 1465 ultrasounds and 55 carcasses recorded, he has earned great respect through actual data. E-Lee Angus has found Fireball to be the ideal mating on Growth Fund Lucy 2022 and for the first time is offering 2 FEMALE SEXED embryos! With her CED +10, WW +90, \$C +338 combination she is 1 of only 2 Growth Fund Daughters in the Breed with this amazing combination out of 3,878 non-parent Growth Fund daughters! The resulting offspring would have interim EPD'S of: +13 CED, +77 WW, +145 W, +12.3 HP, +14 CEM, .44 Claw, .46 Angle, -.41 PAP, .39 HS, +81 CW, +1.47, +370\$C. The maternal granddam first sold for a \$17,000 valuation, and the great-granddam, (Lucy 3829), sold 1/2 interest in 2010 for \$50K. This is a highly dependable mating with industry-wide respect.

Selling 2 heifer sexed IVF embryos and guaranteeing 1 pregnancy if transfered by an AETA certified embryologist or Whitaker Embryo services. Embryos stored with E-LEE Angus or Show-Me-Genetics in Strafford, MO. Buyer will be furnished with certificate of embryo transfer.

HEIFER SEXED EMBRYOS!



**GB FIREBALL 672
SIRE OF LOT 63**



**E-LEE GROWTH FUND LUCY 2022
DAM OF LOT 63**

SHOW ME EMBRYOS

TURN THE PAGE FOR SEMEN

70

GENEX 10 STRAWS OF ANY \$30 PRICED SEMEN

10 Semen

Contributed: Genex Rep Tammy Wallace 417-592-0145



EBB WILDCAT 9402

71

E-LEE MAYFLOWER ARETE 2809

5 Semen DOB: 01/21/22 Tattoo: 2809 Reg: 20362959

WAR Cavalry B063 Z044

Wilks Regiment 9035

Vintage Chloe 6137

V A R Discovery 2240

E-Lee Mayflower Azalea 803

E-Lee Flower 4268 83

CED	BW	WW	YW	RADG	SC	HP	CEM	Milk
11	2	94	164	0.31	1.65	15	9	29
15%	70%	1%	1%	10%	10%	15%	40%	30%
Doc	CW	Marb	RE	Fat	\$M	\$W	\$B	\$C
23	69	1.08	0.87	-0.02	67	86	180	300
30%	10%	15%	20%	15%	40%	2%	10%	10%

Consigner: E-Lee Angus Don Ely 417-830-7530



E-LEE MAYFLOWER ARETE 2809

72

K BAR D JOE DIRT 20C

10 Semen DOB: 3/19/15 Tattoo: Reg: 18181903

Soo Line Alternative 9127W

K Bar D Joe Canada 18Y

Malsons Savannah 102W

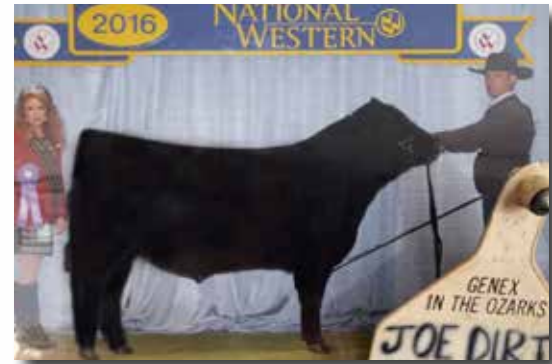
Vermilion Pony X Press

K Bar D Wendy 1010

K Bar D Wendy K1T

CED	BW	WW	YW	RADG	SC	HP	CEM	Milk
2	1.8	56	102	0.28	0.46	15.1	5	19
80%	65%	65%	60%	25%	75%	15%	80%	90%
Doc	CW	Marb	RE	Fat	\$M	\$W	\$B	\$C
11	47	0.16	0.75	-0.02	57	44	139	237
80%	45%	90%	25%	15%	60%	80%	45%	50%

Consigner: Wood River Cattle Co. Mike Moyer 307-340-1351



K BAR D JOE DIRT 20C

73

EAR PRIME TIME 0002

2 Semen DOB: 2/26/20 Tattoo: Reg: 19733707

G A R Sure Fire 6404

GB Fireball 672

GB Anticipation 432

SydGen Exceed 3223

ACC Barbara 8038

ACC Barbara 4066

CED	BW	WW	YW	RADG	SC	HP	CEM	Milk
11	2	68	135	0.33	0.74	18.6	10	31
15%	70%	30%	15%	4%	60%	1%	35%	20%
Doc	CW	Marb	RE	Fat	\$M	\$W	\$B	\$C
17	68	2.47	1	-0.004	66	62	267	412
55%	10%	1%	10%	30%	35%	40%	1%	1%

Consigner: Wiles Ridge Ranch Truman Wiles 417-252-0726



EAR PRIME TIME 0002

74 GB FIREBALL 672

5 Semen DOB: 10/20/16 Tattoo: Reg: 18690054

GAR Sure Fire

GAR Sure Fire 6404

GAR Complete N281

GAR Anticipation

GB Anticipation 432

GB Ambush 269

CED	BW	WW	YW	RADG	SC	HP	CEM	Milk
16	-0.2	66	128	0.34	1.43	9.9	15	23
2%	20%	35%	25%	2%	15%	70%	3%	70%
Doc	CW	Marb	RE	Fat	\$M	\$W	\$B	\$C
19	71	2.29	1.25	0.031	58	57	266	403
45%	5%	1%	1%	75%	55%	50%	1%	1%

Consigner: ABS Rep Shane Roark 417-259-2332

**GB FIREBALL 672****75 VIRGINIA TECH STATESMAN**

5 Semen DOB: 1/16/21 Tattoo: Reg: 20085208

S S Niagara Z29

Tehama Patriarch F028

Tehama Elite Blackbird D826

Ellingson Homestead 6030

Vpi 310A Rita 9G6 Et

AED Rita 310A

CED	BW	WW	YW	RADG	SC	HP	CEM	Milk
8	0.2	89	167	0.32	0.86	18	14	28
35%	30%	2%	1%	10%	50%	2%	4%	35%
Doc	CW	Marb	RE	Fat	\$M	\$W	\$B	\$C
20	81	1.2	0.86	0.07	84	82	208	354
45%	2%	10%	20%	95%	10%	3%	2%	1%

Consigner: Select Sires Rep Brad Cromer 417-689-2119

**VIRGINIA TECH STATESMAN****76 SG SALVATION**

2 Semen DOB: 2/5/19 Tattoo: Reg: 19559741

Poss Easy Impact 0119

Baldrige Alternative E125

Baldrige Blackbird A030

Basin Payweight 1682

MGR JP Rita 7037

MGR Rita 2145

CED	BW	WW	YW	RADG	SC	HP	CEM	Milk
8	3.2	78	139	0.33	0.52	10.7	13	20
35%	90%	15%	10%	4%	70%	60%	10%	85%
Doc	CW	Marb	RE	Fat	\$M	\$W	\$B	\$C
23	84	1.34	0.96	0.029	68	60	235	373
25%	1%	3%	10%	75%	30%	45%	1%	1%

Consigner: Simon's Tall Pines Angus Drew Simon 417-838-2521

**SG SALVATION**

NEW

SEMEN

77 YON SALUDA

5 Semen DOB: 9/9/21 Tattoo: Reg: 20336998

Mohnen Substantial 272

Sitz Stellar 726D

SITZ Pride 200B

V A R Discovery 2240

Yon Sarah D668

Yon Sarah A615

CED	BW	WW	YW	RADG	SC	HP	CEM	Milk
9	1	83	145	0.29	1.86	20.7	14	29
30%	45%	5%	10%	20%	5%	1%	4%	30%
Doc	CW	Marb	RE	Fat	\$M	\$W	\$B	\$C
16	65	1.16	0.8	0.024	99	82	186	340
65%	15%	10%	25%	70%	1%	3%	5%	1%

Consigner: Select Sires Rep Brad Cromer 417-689-2119



YON SALUDA

78 E&B PLUS ONE

2 Semen DOB: 1/26/18 Tattoo: Reg: 19196960

Connealy Confidence 0100

Connealy Confidence Plus

Elbanna of Conanga 1209

E&B 1680 Precision 1023

E&B Lady 1023 Precision 936

E&B Lady 878 New Design 441

CED	BW	WW	YW	RADG	SC	HP	CEM	Milk
13	-0.8	53	104	0.29	0.06	10.7	8	23
10%	15%	75%	60%	20%	95%	60%	55%	70%
Doc	CW	Marb	RE	Fat	\$M	\$W	\$B	\$C
15	29	0.98	0.84	0.008	73	51	155	274
65%	85%	15%	20%	45%	20%	70%	25%	20%

Consigner: Seagraves Angus Kevin Devore 618-339-0665



E&B PLUS ONE

79 TEKO K2201 EXPLOSIVE

10 Semen DOB: 02/14/22 Tattoo: K201 Reg: 20337614

Casino Bomber N33

K C F Bennett Exponential

K C F Miss Southside B226

MW DNAmite

Teko K2003 Blackbird

Bakers Blackbird 8022

CED	BW	WW	YW	RADG	SC	HP	CEM	Milk
8	0.7	87	156	0.3	0.52	15.9	7	35
35%	40%	3%	2%	15%	75%	10%	65%	10%
Doc	CW	Marb	RE	Fat	\$M	\$W	\$B	\$C
30	84	0.79	1.31	-0.033	84	89	202	346
5%	1%	30%	1%	5%	10%	1%	2%	1%

Consigner: TeKo Farm Ted Koontz 417-839-3960



TEKO K2201 EXPLOSIVE

THE POWER

W^{iles}
R^{idge}
R^{anch}

REGISTERED ANGUS
BULLS FEMALES
WILLOW SPRINGS, MO

Private Treaty Sales

TRUMAN WILES 417-252-0726
www.WilesRidgeRanch.com

BLUE MOUND
ANGUS 

REGISTERED ANGUS BULLS & FEMALES
Performance & Genomic Enhanced EPDs
Private Treaty Sales
Eldorado Springs, MO

Fred Swartzentruber 417-327-3752
Sheldon Swartzentruber 417-327-5885

Simon's Tall Pines



Private Treaty Sales Registered Angus

Larry & Drew Simon
Willow Springs, MO 417-469-3352

 **SEAGRAVES**
ANGUS

KEVIN DEVORE
618-339-0665

GENOMIC & PERFORMANCE ENHANCED EPDS
PRIVATE TREATY SALES

1849 SEAGRAVES AVENUE
MULBERRY GROVE, IL 62262



ASHER FARMS
TOM & TRACEY ASHER



6215 STATE ROUTE N
POMONA, MO 65809
TOM 417-257-3220
TRACEY 417-257-3653

Private Treaty Sales

GENOMIC ENHANCED EPDS WITH PARENTAGE VERIFIED

 **TEKO**
ANGUS FARM



You don't have to be big to be Great!

TED KOONTZ 866 Johnson Road
417-839-3960 Sparta, MO 65753

BEAU'S
BLACK
ANGUS

Registered Angus Bulls & Females
Private Treaty Sales

BEAU, KAREN, & CARLY DAVIS
417-880-6863 Strafford, MO

 **DRIFTWOOD HOLDING TRUST**
ANGUS RANCH


Cecil Huff
HC 71 Box 163
Ava, MO 65608
417-250-1300



CED +7
WW +72
YW +120
SC +1.88
HP +15.1
MILK +28

DHT LOA 833 CHARMER 407

ST & FEED & SEED, LLC

 PURINA LIVESTOCK & PETS

417-345-2992

1776 S. ASH ST.
BUFFALO, MO 65622

SAM DRYER



 @STFEEDSEED



Top AI Sires at Affordable Prices

Don Ely
Hartville, Mo
417-830-7530

www.summitgenetics.us



SW +86
SB +180
SC +300

E-LEE MAYFLOWER ARETE 2809

DOB: 01/21/22 REG #20362959

CED +11 WW +94 YW +164 MILK +29
CW +69 MARB +1.06


Hostettler
BUILDINGS
417.345.7418

BUILDING YOUR
DREAMS



Bailey
CHEVROLET 



JOHN BAILEY (888) 517-7321
720 E MAIN WILLOW SPRINGS, MO 65793



We Finance Land

..... and just about everything to go with it.

By keeping our loans local,
we're in the business
of making dreams a reality.



BTC BANK

Community Minded...Just Like You



www.btcbank.bank

1505 South Ash St., Buffalo | 417-345-2113

Kropf Feeds



**365
CATTLE
MINERAL**

BUY 10 GET 1 FREE
WHILE SUPPLIES LAST!

19 Prairie Lane
Buffalo, MO 65622

417-733-2501

www.KropfFeeds.com

LS Tractor
Mahindra



MASSEY FERGUSON



FERRIS

KRONE



STIHL

Priefert
Farm, Ranch & Kடை

ARROWQUIP

HUBBARD
A Tech company

Cargill

ADM

Wrangler

ARIAT

HIRSCH

**FEED & FARM
SUPPLY, INC.**

RENTAL • PARTS • SERVICE • FEED • FENCE • EQUIPMENT
OPEN 7AM - 7PM 789 WORLEY DRIVE • WEST PLAINS, MO
MONDAY-SATURDAY hirschfeed.com • (417) 256-3749



GENEX™



TAMMY WALLACE
417-592-0145

ABS



Shane Roark 417-259-2332



SELECT SIRS
INC.

YOUR SUCCESS *Our Passion.*

Brad Cromer 417-689-2119

**Williams
Veterinary
Service**

Dr. Logan Williams, DVM Dr. Megan Bockting, DVM
Large & Small Animal Services



11135 Stave Mill Rd
Mountain Grove
MO 65711
(417) 926-3252
www.williamsveterinaryservice.com



We're rooting for you,
and your farm

You're doing big things, and we're here to help you do more.
That's why we're invested in you, because when you
succeed - the community succeeds.



**Southern
BANK**

Equal Housing Lender | Member FDIC

960 Preacher Roe Blvd.
West Plains, MO 65775

1599 Porter Wagoner
West Plains, MO 65775



Animal
Nutrition

Pasture
Care

Lawn &
Garden

Farm & Home
Supplies

417-256-3911



Welcome to Cattle Country!

Your cattle's health and nutrition
is our number one priority.

We have the experience, knowledge
and products that deliver results.

Richard Brothers is here for your cattle operation!

114 W. 2nd Street
West Plains, MO 65775

Monday - Friday 7:30 AM - 5:00 PM
Saturday 7:30 AM - 12:00 PM

**EUROPEAN IMPORTED
CHAMPION ROTTWEILERS**

**ROTTSTAR
HAUS OF HUFFMAN**

*Puppies
Available*

**JASON HUFFMAN
417-204-3564**



4N *Performance
& Show*

ANGUS FARMS
Mountain Grove, MO

Roger
417-926-2549

Justin
417-926-2603



S&H
Farm Supply, Inc.
www.SandHCountry.com
Family Owned & Operated for over 50 years since 1969!

Cody Nelson
Equipment Sales
Mobile: 417.343.6653
Office: 417.926.6520
Toll Free: 866.926.6520
cody.nelson@shfarmsupply.com

**WOOD RIVER
Cattle Company**

**MIKE MOYER
307-340-1351**

16968 HWY B
HOUSTON, MO
65483



GENEX
IN THE OZARKS
JOE DIRT
49
AN 3313
STAFFORD, MO

*Thank You to All the Bidders & Buyers
at the Fall 2022 Sale*

Thank you
H&B ANGUS FARMS

for Purchasing the
Top Selling Lot

LOT 37
SEAGRAVES RITA 2044



*All buyers invited to view the sale animals morning of sale day
Join us for donuts & coffee sale day morning
Juniors sign up for \$100 drawing*



April 15, 2023
1 PM
Wright County
Livestock Auction
Mountain Grove, MO

Sale Location: 8915 Business 60, Mountain Grove, MO

The Best Angus Genetics in the Midwest



Index Of Consigners

3/0 Cattle Company - Wes Ogle 417-448-4126	60, 61
Allegro Angus - Craig Stephenson 417-894-4285	33, 33A
Asher Farms - Tom & Tracey Asher 417-257-3220	36, 36A, 47
BAR Angus Ranch - Rob Price 314-974-5263	11, 21
Beau's Black Angus - Beau Davis 417-880-6863	12, 18
Blue Mound Angus - Fred Swartzentruber 417-327-3752	41, 50
DHT Angus - Cecil Huff 417-250-1300	17, 51
E-Lee Angus - Don Ely 417-830-7530	24, 63
Guffey Farm - Stacy & Stephanie Guffey 417-372-2903	8
Hudson Angus Farm - Roland Hudson 573-338-2040	3, 4, 19, 20, 53
JL Cattle Company - Shannon Jenkins 417-718-8062	38, 39
Kelley Cattle Company - Kent Kelley 417-274-7300	5, 6, 7, 34, 34A 35, 35A
Redwine Angus Farm - Jake Redwine 870-810-3901	43, 44
Seagraves Angus - Kevin Devore 618-339-0665	15, 48, 49
Sinning Cattle Company - Chris & Amber Sinning 417-849-6417	2, 32, 32A 37, 40
Smith Valley Angus - Kim & Brian Smith 573-729-2910	14, 16, 45
TEKO Angus Farm - Ted Koontz 417-839-3960	23, 55
Voss Angus David Voss 314-420-0241	1, 13, 22
Wiles Ridge Ranch - Truman Wiles 417-252-0726	9, 10, 30, 30A, 31, 31A, 42, 46, 54
Windy Acres Angus - Clint Hunt 417-840-2050	62A, 62B

*All buyers invited to view the
sale animals morning of sale day*

Join us for donuts & coffee sale day morning

Juniors sign up for \$100 drawing

INDEX OF CONSIGNERS



SALE MANAGER
PHOEBE WILES
PO BOX 23
WILLOW SPRINGS, MO 65793